



e-business



# IBM WebSphere software platform for e-business

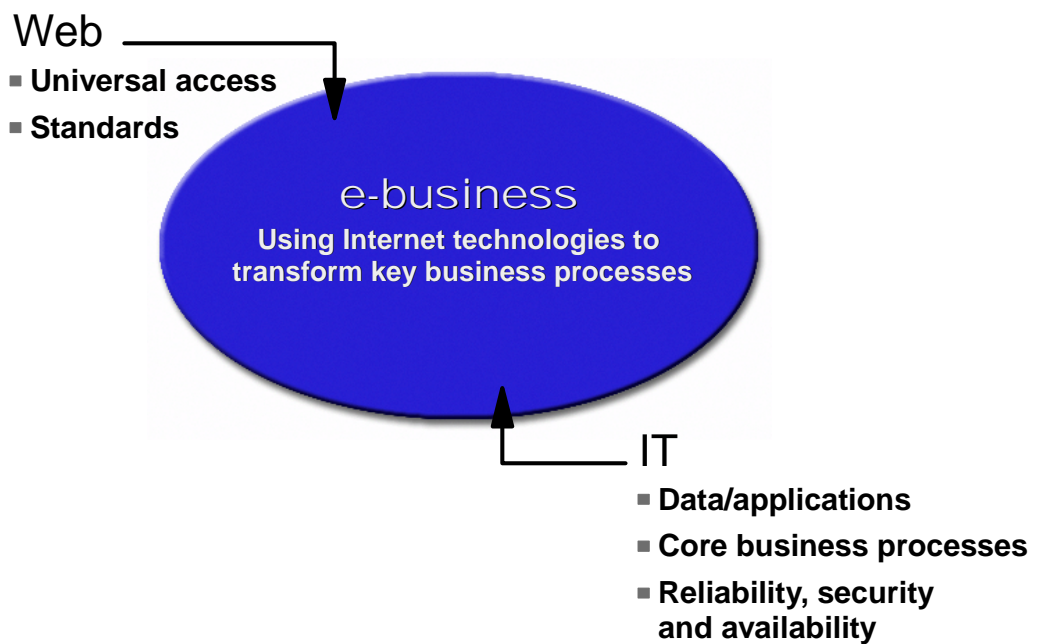
## Technical Overview



e-business



## The Emergence of e-business





e-business



## Market Trends

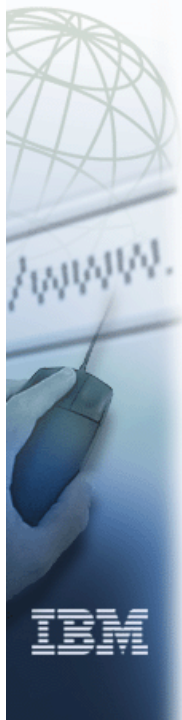
---

- Move business to Internet
  - Use Internet as the deployment ground of new mission-critical applications
  - Extend existing applications and enterprise data to the Internet
- Exploit Web model on intranets
- Improve bottom line
  - Reduce time to market
  - Cut costs and increase ROI

? Copyright 1999-2001 IBM Corporation



e-business



## Successful e-business applications

---

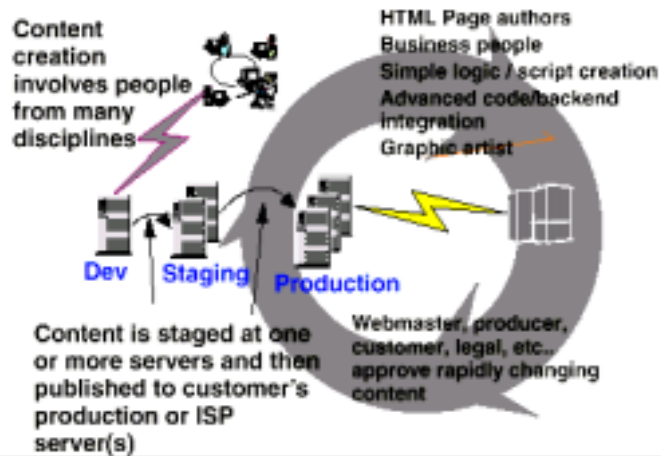
- **Server-centric**: no requirements on end-users
- **Standards-based**: Web, Java, EJB, XML
- **Quick to develop, deploy, use**: integrated tools
- **Leverage core systems**: connectivity
- **Scalable**: multi-platform, workload management
- **Powerful**: best performances, analysis tools
- **Manageable**: admin and system management tools
- **Secure**: security architecture and tools

? Copyright 1999-2001 IBM Corporation



e-business

## The Web Application World



? Copyright 1999-2001 IBM Corporation



e-business

## Review of technologies

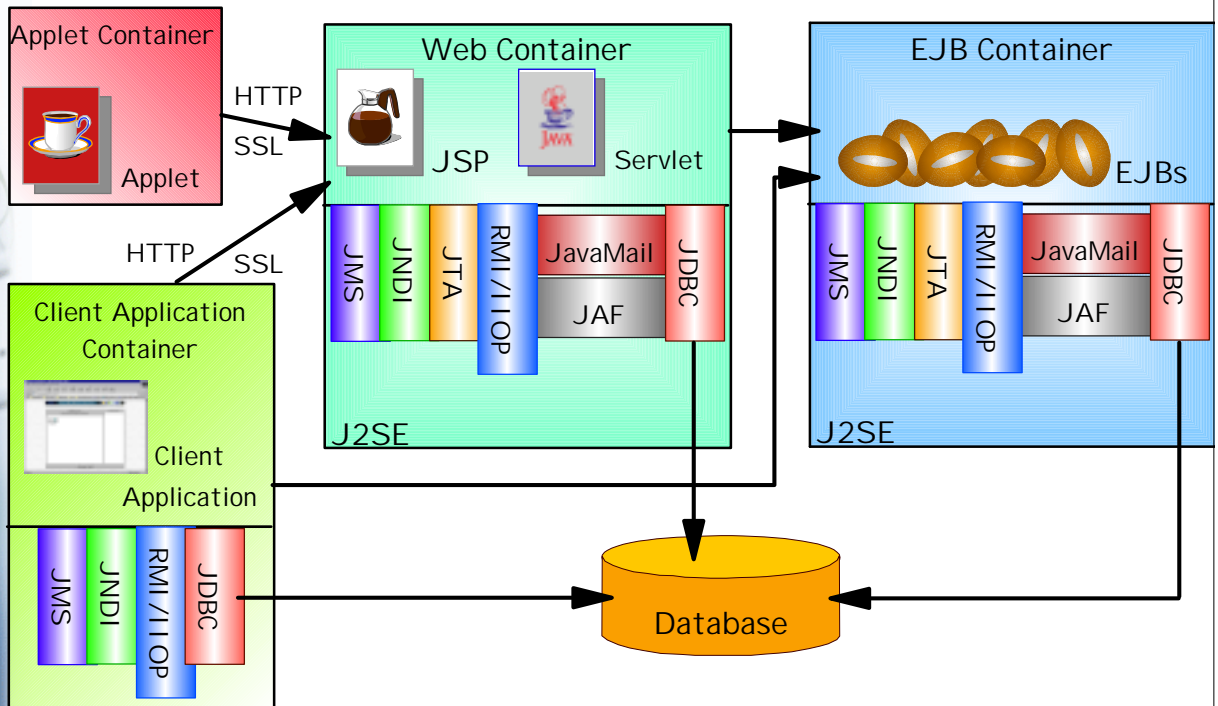
- **Servlet:**  
A **server-based Java** program used to interact with clients  
**When is it best to use a Servlet?**
  - Minimize browser dependencies
  - Applets too big to download
  - Need for greater scalability
- **JavaServer Page (JSP):**  
**HTML pages with dynamic content (in-line java)**
  - Separating presentation logic from business logic
  - Makes it easy for the Web page designer to create HTML pages with dynamic content
- **JavaBean:**  
Java component for representing and storing data, in a **standardized** manner
- **Enterprise JavaBean (EJB):**  
Components that implement **business logic** and typically access **enterprise data, transactions, and back-end applications**
  - Are deployed in and run on EJB servers
  - Distributed, Persistent and Transactional
  - 2 types: Session Beans and Entity Beans
- **XML:**  
**Meta-language** for managing and **exchanging** document types and formats

? Copyright 1999-2001 IBM Corporation



e-business

## J2EE Architecture

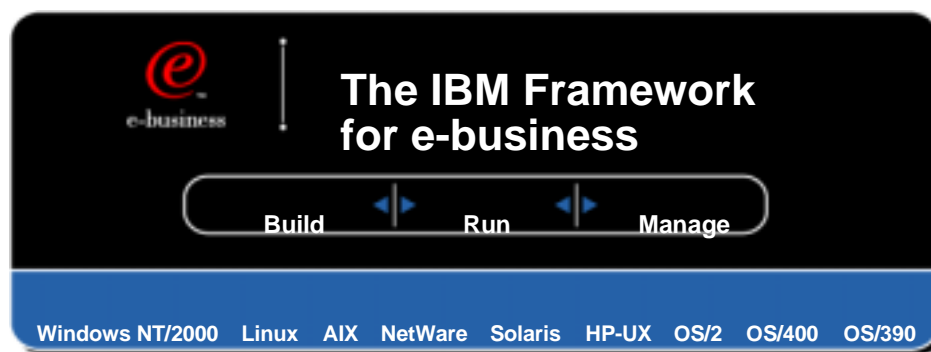


? Copyright 1999-2001 IBM Corporation



e-business

## The IBM Framework for e-business



An architecture that enables continued e-business transformation through the use of :

- an open, **standards-based** e-business platform
- IBM best practices
- a comprehensive product set

Build

Run

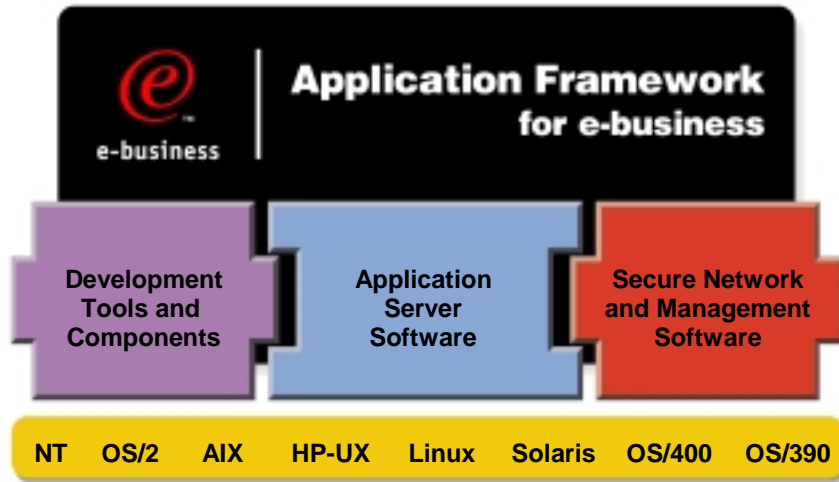
Manage

? Copyright 1999-2001 IBM Corporation



e-business

# The Framework Makes It Work



- **Field-tested methodology** simplifies development and deployment
- Rich product portfolio supports simple to sophisticated applications
- Based on cross-platform standards including Java

? Copyright 1999-2001 IBM Corporation



e-business

# The IBM Framework for e-business

**Transformation & Integration**



**Web-enable business processes**



**Leveraging Information**



**Use data to increase competitiveness**



**Organizational Effectiveness**



**Enable people to be more productive**



**Managing Technology**



**Create a secure, manageable infrastructure**



**Build**

**Run**

**Manage**

? Copyright 1999-2001 IBM Corporation



e-business

## IBM Application Framework for e-business

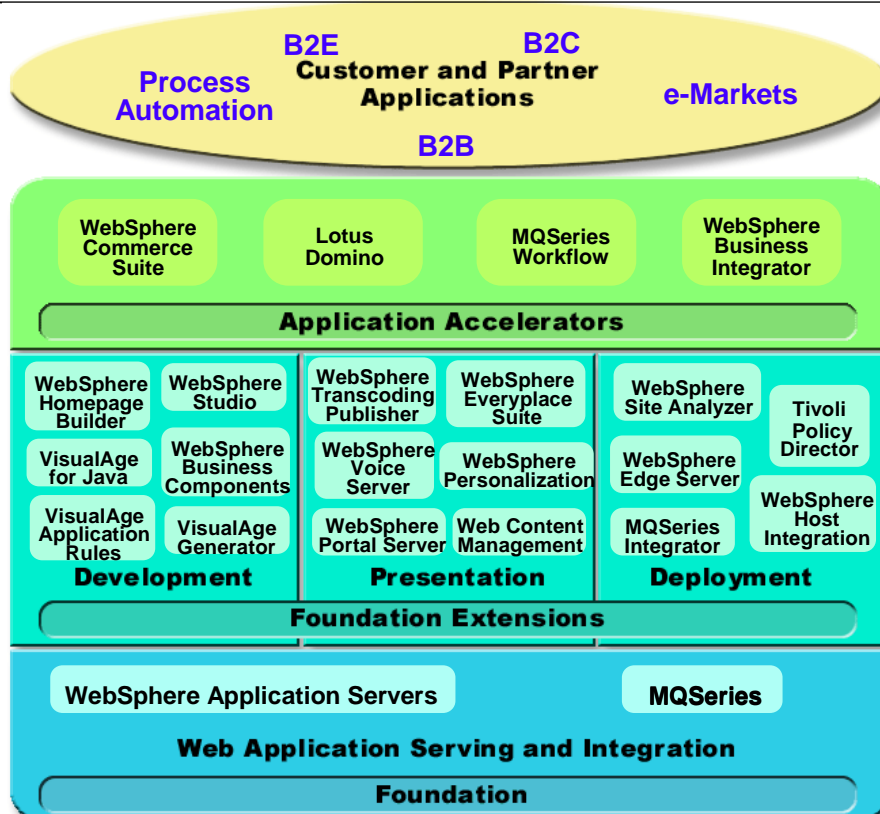
- A comprehensive open-standard roadmap for e-Business
- Application Framework - principles
  - Server-centric applications
  - Managed thin clients
  - Scalable architectures
  - Java-based techniques
  - Platform, Web server independence
  - Industry-standard components, services, interfaces

? Copyright 1999-2001 IBM Corporation



e-business

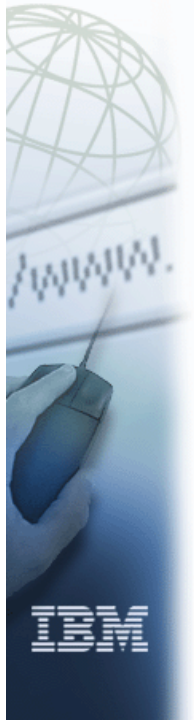
## WebSphere software platform for e-business



3M Corporation



e-business



## What is an Application Server?

---

- Execution environment for "transactive applications"
  - More than a simple Web Server: runs business applications
  - Combining data and value added interactive content
- Successful deployment requires
  - high throughput
  - reliability
  - security
  - manageable application environment
  - linear scalability for data, transactions and sessions

? Copyright 1999-2001 IBM Corporation



e-business



## Application Servers in WebSphere

---

- An application server (server) in WebSphere can contain or support:
  - Web (application) container,
  - EJB container, or
  - Both
- A Web application is a set of related Web resources
  - Addressable resources, e.g., HTML pages, servlets, and JSPs

? Copyright 1999-2001 IBM Corporation



e-business

# Web Application

- Related set of resources
  - Will define a namespace within the URL namespace
    - Root URI
- Define a set of policies
  - Error handler
  - Serve servlets by class name (invoker)
  - JSP support (v0.91, v1.0, V1.1)
- Define both a document root and a classpath
- Provide an associated Servlet Context
- Corresponding RequestDispatcher uses relative URI-based addressing
  - Separate URI from deployment



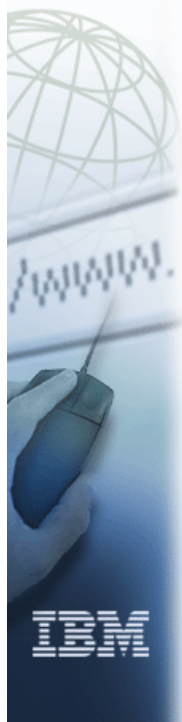
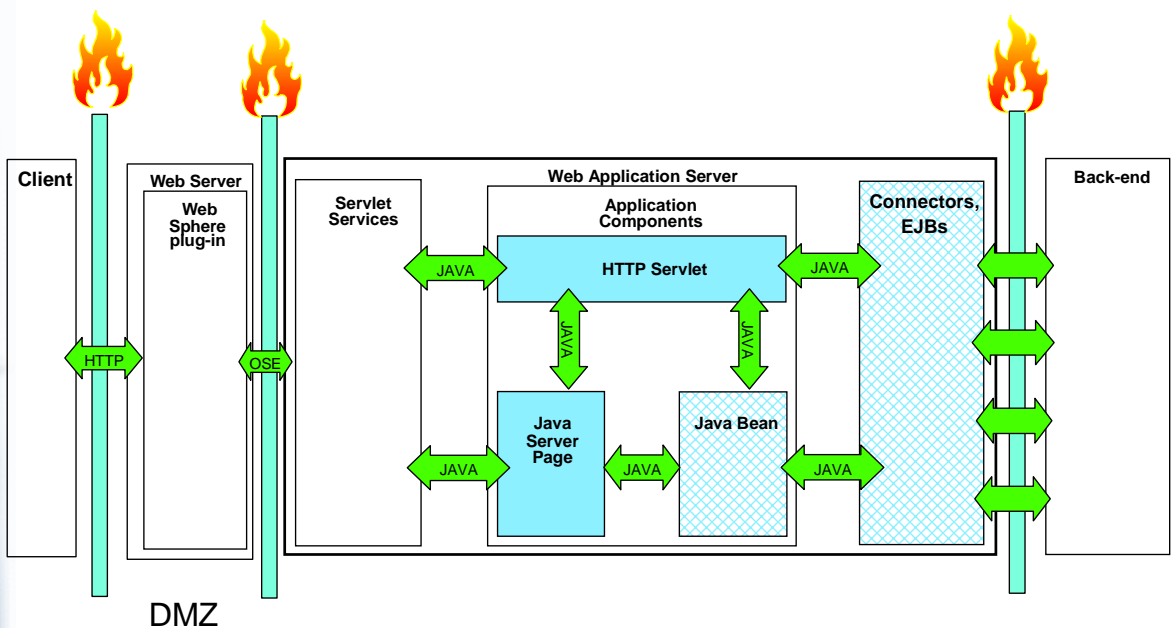
IBM

? Copyright 1999-2001 IBM Corporation



e-business

# Typical Web Application Runtime Architecture



IBM

? Copyright 1999-2001 IBM Corporation

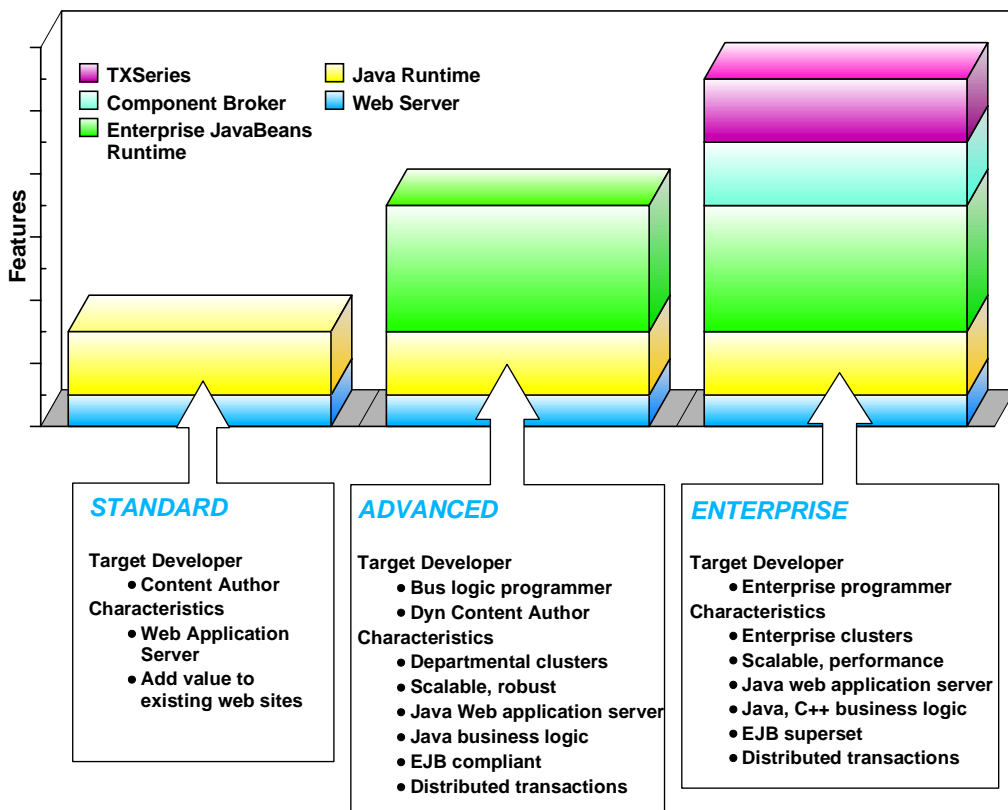




e-business



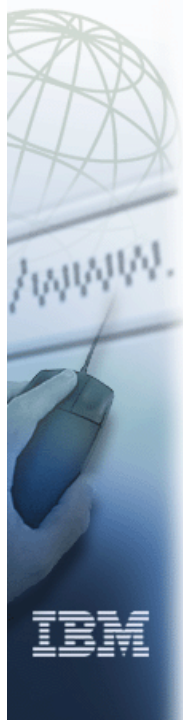
# WebSphere Application Server Editions



? Copyright 1999-2001 IBM Corporation

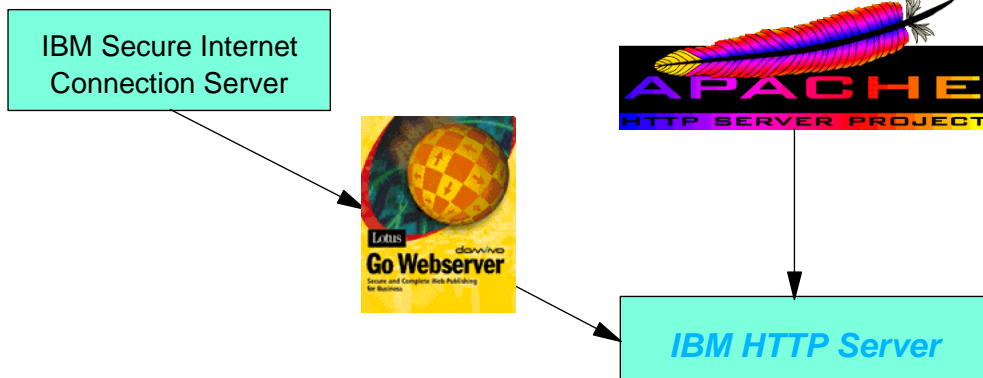


e-business



# IBM HTTP Server 1.3.12

- Based on Apache: guarantee of highest performance
- Additional IBM caching technology
- Secure Sockets Layer (SSL) with Key Management
- Browser-based administration app
- Bundled with WebSphere Application Server 3.x
- NT, AIX, Solaris, and Linux
- For OS/400 based on Apache 2.0
- For OS/390 based on Domino Go Web Server



? Copyright 1999-2001 IBM Corporation

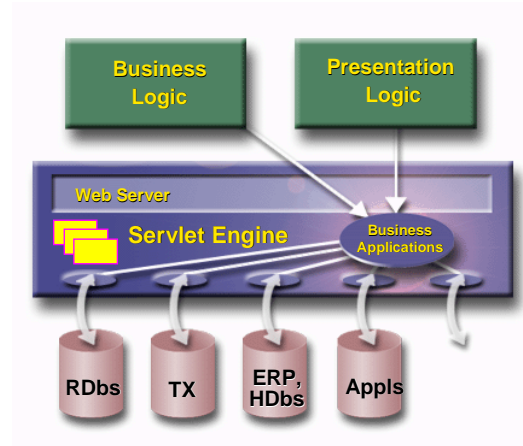


e-business



# WebSphere Application Server V3.5.3 Standard Edition

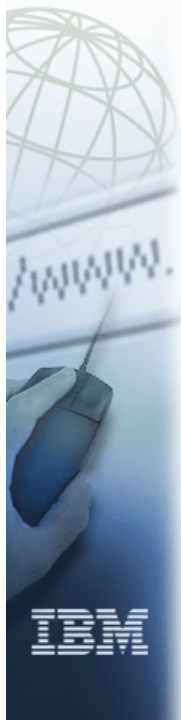
- **Servlet Runtime**
  - IBM JDK 1.2.2
  - Servlet API 2.2
  - Deployment Manager
  - Open support for major web servers
  - HTTP session support (Cookies & URL rewriting)
- **Presentation Services**
  - Dynamic Content generation
  - JavaServer Pages 0.9, 1.0 & 1.1
- **Application Services**
  - Connection Pooling & Datasources
  - Built-in application security
  - XML Document Structure Services
  - LDAP support, JDBC 2.0
  - Java-based application adaptors
- **Single node administration**
- **Integrated Security for all Web resources**
- **Tivoli-ready**
- **Available on NT, AIX, Solaris, HP-UX, OS/390, OS/400, Netware, Linux**



? Copyright 1999-2001 IBM Corporation

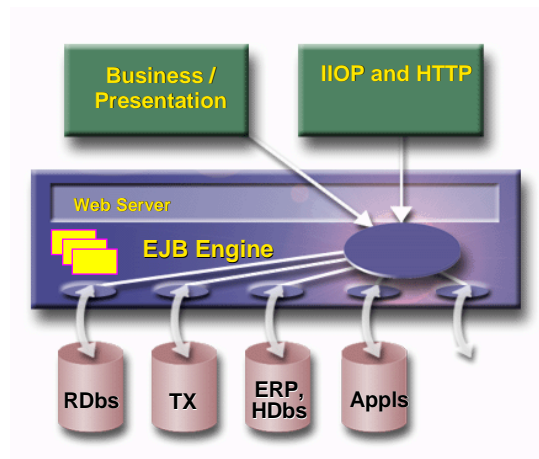


e-business



# WebSphere Application Server V3.5.3 Advanced Edition

- **"Standard" Plus:**
- **EJB Runtime**
  - Full Session & Entity 1.0+ Support
  - Deployment Manager
- **Application Services**
  - Persistent Storage & 2PC - DB2, Oracle, Sybase, SQL Server, DB2/390
  - JNDI naming service, JMS 1.0.1
  - Common Connector Framework (EABs)
- **Scalability**
  - Clustering: models and clones
  - Servlet Redirector
  - Workload Management
  - Failover support
  - Multi-node administration
- **Platform for**
  - Single signon with Domino
  - Personalization
  - Pervasive computing
  - WebSphere Commerce Suite
- **JSP batch compile, tight integration with VisualAge for Java**
- **Available on NT, Win2K, AIX, HP-UX, Solaris, Linux, Linux/390**



? Copyright 1999-2001 IBM Corporation



e-business

## WebSphere Domain

- IBM WebSphere-based applications will be deployed on potentially many physical nodes (logical middle tier)
- Every node participating in an application or collection of applications:
  - Is part of a single administrative domain
  - Will have the WebSphere Adminserver process running on it
  - Will have one or more managed servers or servlet redirectors running on it
  - May have a Web server running on it



? Copyright 1999-2001 IBM Corporation

## WebSphere Scalability Model

- **Server Group**: collection of identical **servers** (Servlet or EJB engine, i.e. a JVM)
- Can have multiple servers on one **node**
- Can have multiple servers distributed across nodes
- A **model** defines the configuration of a server
- Each server is a **clone** of the model (application server + JVM)
- A server group can be regarded as if it were a single server: grouped start, stop...
- A **server group** is a collection of servers participating in **Workload Management**

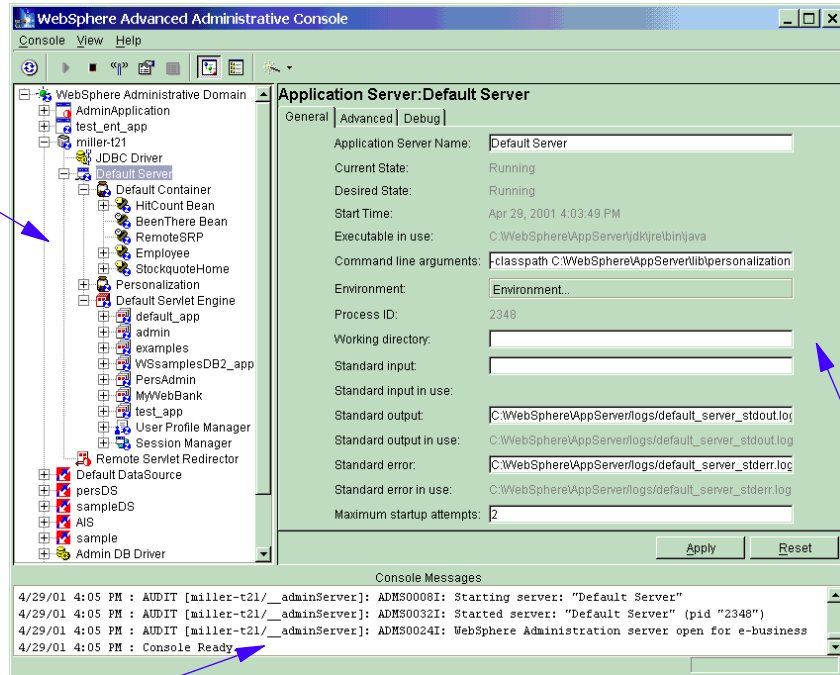


e-business

# WebSphere App Server Admin Console



Topology



Messages

Settings

? Copyright 1999-2001 IBM Corporation



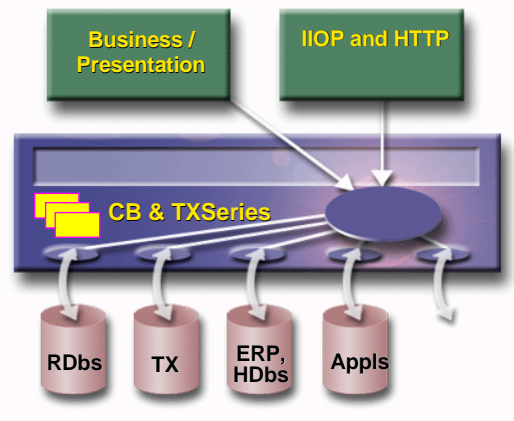
e-business

# WebSphere Application Server V3.5

## Enterprise Edition



- "Advanced" Plus:
- Component Broker
  - JDK 1.2
  - ORB Support for Enterprise JavaBeans
  - C++ & Java remote CORBA objects
  - Security enhancements
  - AIX enhancements
  - CB Toolkit
    - Team support enhancements
    - VAJava integration
    - EJB support
  - Informix support
- TXSeries
  - CICS 4.2.1 support
  - Encina 4.2.1 support
  - Tivoli support
- Available on AIX, OS/390 (via CB/390 and TX/390), Win NT, Solaris

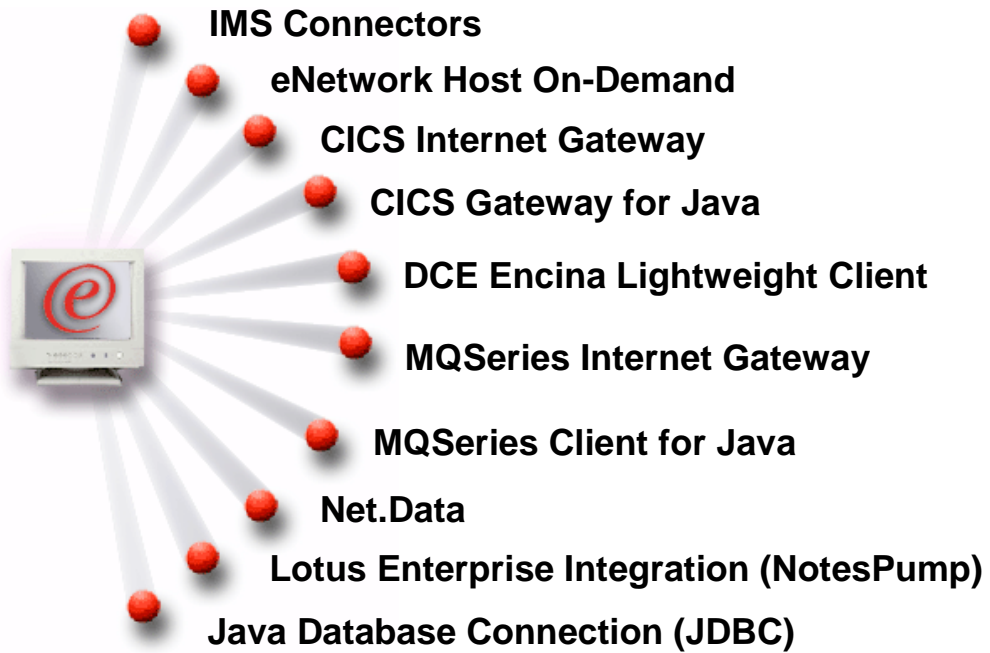


? Copyright 1999-2001 IBM Corporation



e-business

## e-business Connectors



- Universal Web access to all IT assets
- Increased productivity

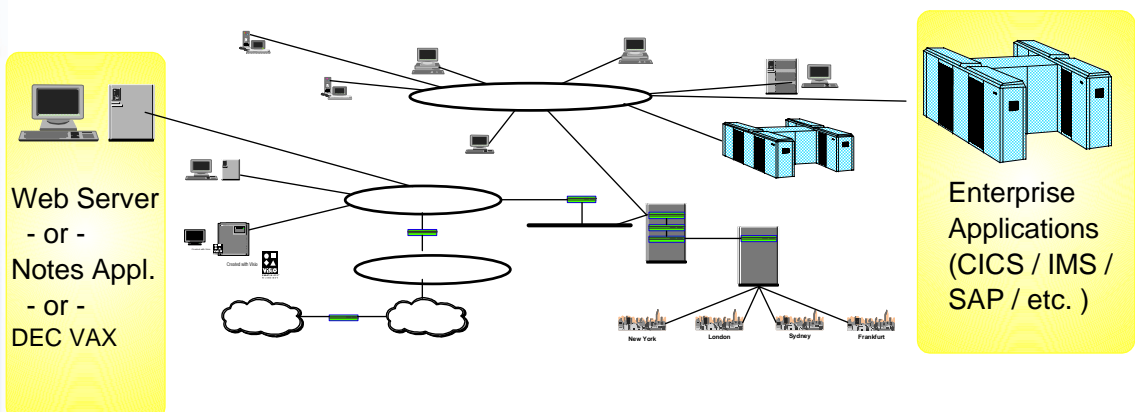
? Copyright 1999-2001 IBM Corporation



e-business

## The Challenge

- Moving information between different systems
- Different Operating Systems
- Across Different Network Protocols
- Into Different Application Environments



? Copyright 1999-2001 IBM Corporation



e-business

## The Solution -- IBM MQSeries

- IBM's Commercial Message Product
  - Message Oriented Middleware (MOM)
- Message Delivery
  - Assured Delivery - Once and only once
  - Simple application interface
  - Supports over 35 platforms
- Transactional
- Secure
- Fast
- Supports Java Message Service 1.0.1
- Ideal for transporting XML

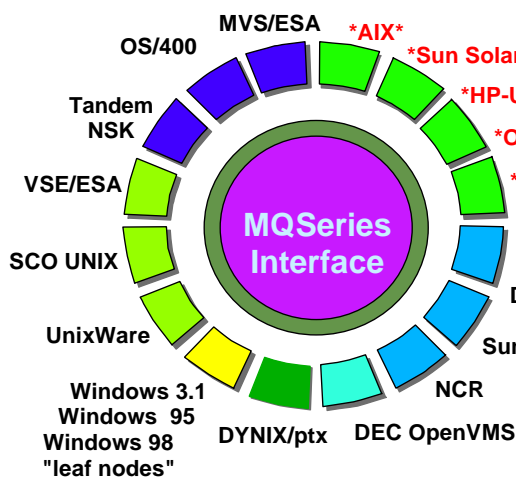
? Copyright 1999-2001 IBM Corporation



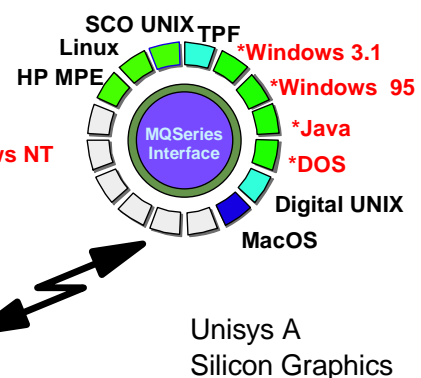
e-business

## MQSeries Platform Coverage

### Queue Managers



### Clients only



plus

- Compaq Tru64 UNIX
- and several more ...

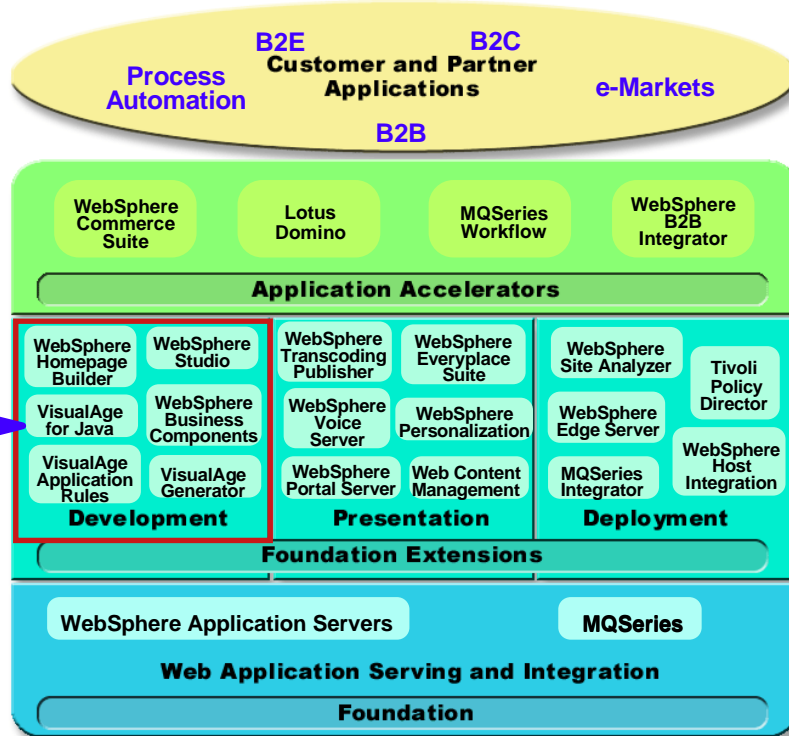
\*Version 5 Support

? Copyright 1999-2001 IBM Corporation



e-business

# WebSphere software platform Foundation Extensions - Development

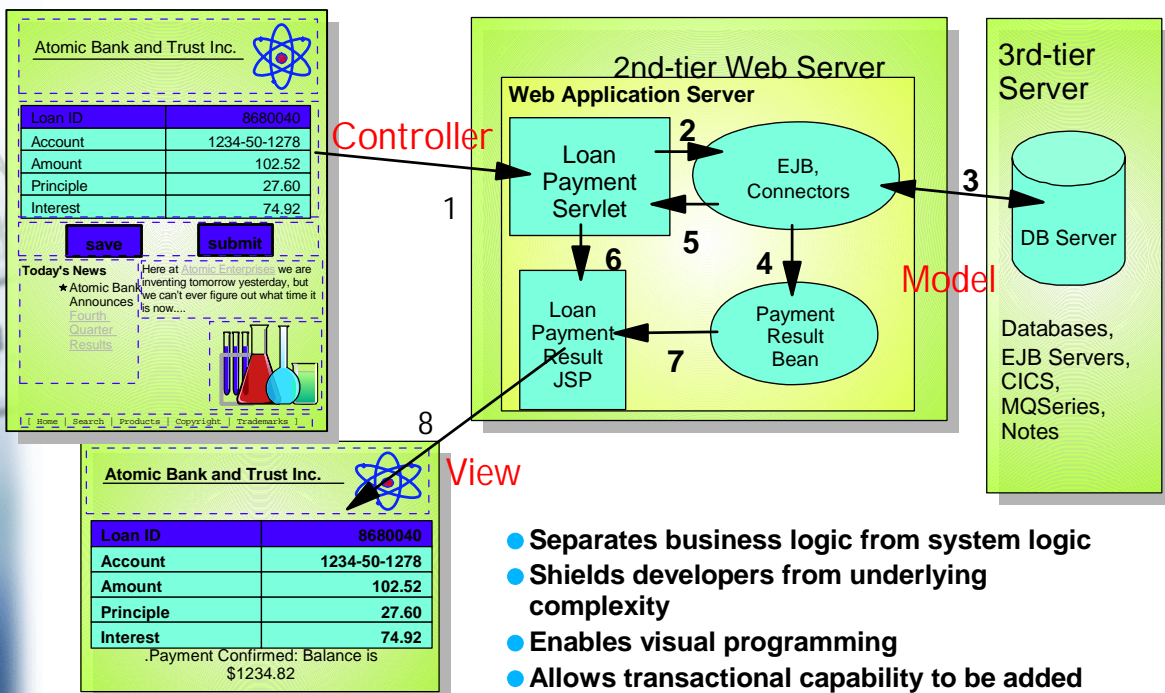


Copyright 1999-2001 IBM Corporation



e-business

# The Web Application Programming Model



- Separates business logic from system logic
- Shields developers from underlying complexity
- Enables visual programming
- Allows transactional capability to be added separately and quickly
- Develop once, deploy anywhere

Copyright 1999-2001 IBM Corporation



e-business



IBM

# Application Components comparison

## Servlets

- Content Generation
- Advantages
  - Java benefits
- Disadvantages
  - Constant changes required

## JavaBeans

- Content Access
- Advantages
  - Reusable components
  - Easy editing
- Disadvantages
  - Not transactional

## Java Server Pages

- Content Presentation
- Advantages
  - Flexible usage
  - Easier editing
- Disadvantages
  - Same as for servlets

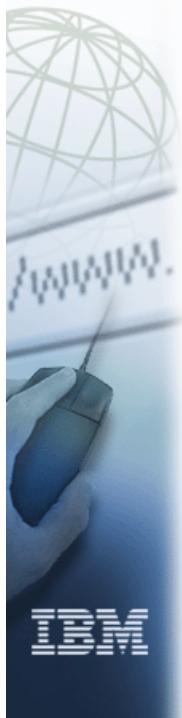
## Enterprise JavaBeans

- Transactional Content Access
- Advantages
  - Simplifies servlet programming
  - Maximizes servlet stability

? Copyright 1999-2001 IBM Corporation



e-business



IBM

# Development Tools

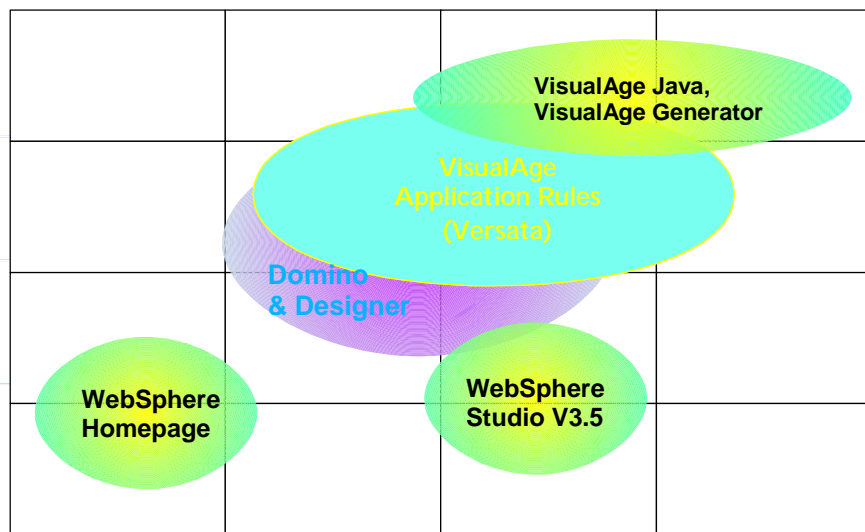
Skill Type

Component Developers

Business Logic Developers

Application Analysts

Content Authors



Static Publishing → Dynamic Publishing / Database-driven → Transactional

Web Site Value/Complexity

? Copyright 1999-2001 IBM Corporation





e-business



## VisualAge for Java

### Full Featured Java Development Environment

- Visual composition with JavaBeans
- Teamwork with shared repository, plus tight integration with 3rd Party SCM tools
- Versioning - including project resources
- Incremental Compilation
- Permanent Consistency Checking
- Coding assistance and easier JDK migration
- Integrated Debugger
- Integrated Test Environment, Servlets, JSP, EJBs
- Servlet wizard
- Built-in IBM high-performance JDK, with all Java standards and extensions: Swing, SQLJ, RMI...
- XMI Toolkit and round-trip interface with Rational Rose
- ORB interoperability -- use multiple ORBs
- Supports Jakarta Tomcat
- Includes Domino access classes



VisualAge

? Copyright 1999-2001 IBM Corporation

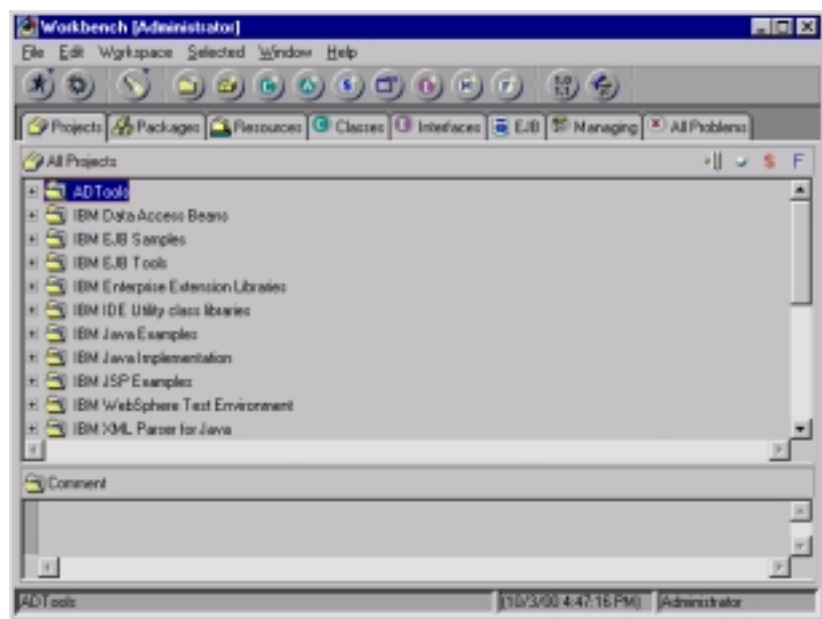


e-business



## The IDE Workbench Views

- Projects
- Packages
- Resources
- Classes
- Interfaces
- EJB
- Managing
- All Problems

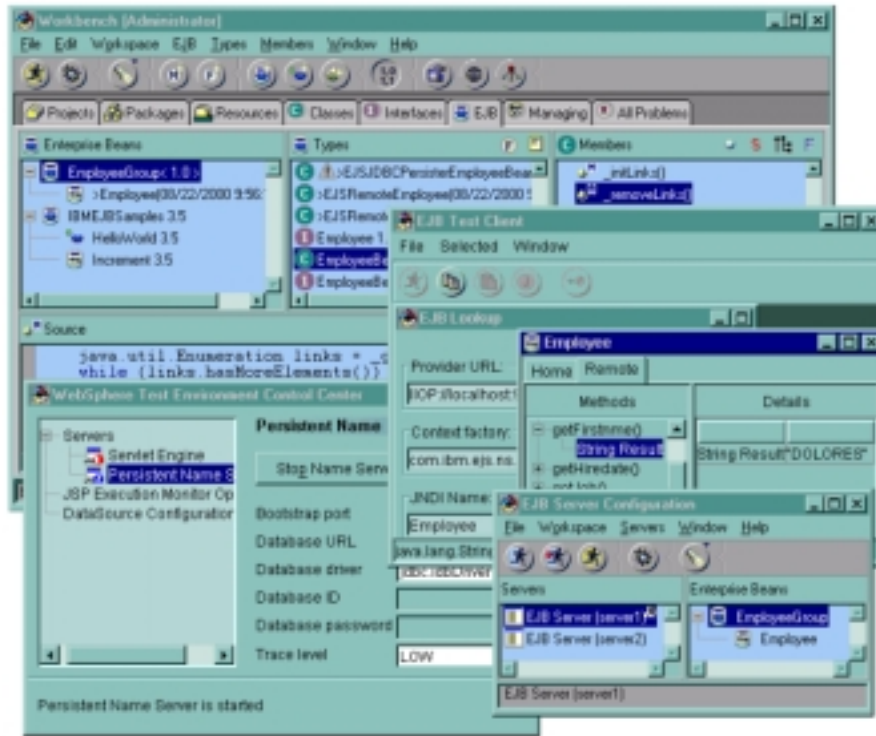


? Copyright 1999-2001 IBM Corporation



e-business

# VA Java IDE -- customized



? Copyright 1999-2001 IBM Corporation

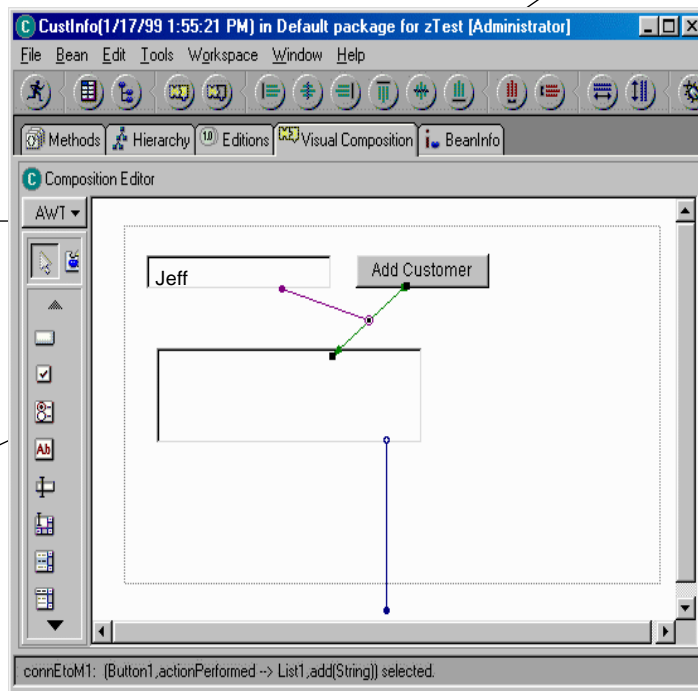


e-business

# VA Java GUI Builder

## Composition Editor

Bean Palette  
visual beans,  
non-visual  
beans,  
custom beans  
3rd party



Java Code  
- Applets  
- Applications  
- JavaBeans  
- JavaScript

? Copyright 1999-2001 IBM Corporation

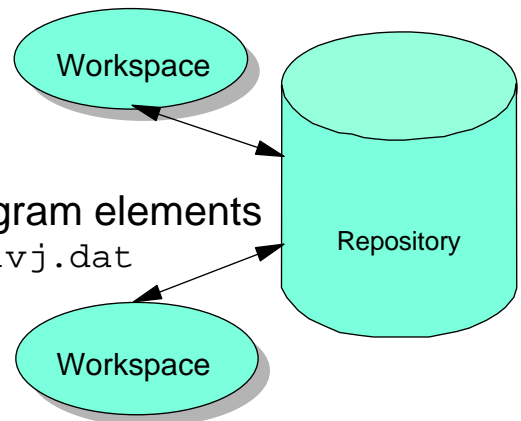


e-business



## How the IDE stores data

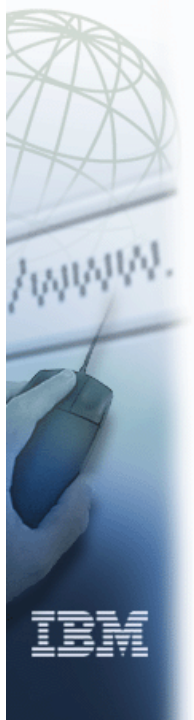
- The Repository
  - Central store for all classes
  - Contains information of all program elements  
`x:\IBMVJava\Ide\Repository\ivj.dat`
  - May be shared
- The Workspace
  - Holds all classes presently being worked with
  - Add elements by creating or adding from repository  
`x:\IBMVJava\Ide\Program\ide.icx`
  - One per client



? Copyright 1999-2001 IBM Corporation



e-business



## Manipulating Versions

- The value of versioning ...
  - To take a snapshot
  - To have a baseline for code you plan to modify
- Automatic Version Control and Source Recovery
  - History of all changes
  - Easy to experiment and back out
- Support Multiple Versions of a Project
  - Prototype through to Production
- Only one version, loaded in Workspace at a time
- Can replace with a different version from repository
- Can compare with a different version

? Copyright 1999-2001 IBM Corporation



e-business

# WebSphere Studio

TOOLS FOR CREATING DYNAMIC, OPEN, WEB APPLICATIONS WITH FLEXIBLE DEPLOYMENT OPTIONS!

## ● Design, develop, debug/test, and publish

- Page designers, graphic artists, and programmers, can all work on the same projects
- Comprehensive tools for you or your team to create all elements of static and dynamic web sites

## ● Help your multidisciplinary team work together

- Common view of Web project files and relationships
  - Manages Web projects and lets you manage all of interrelated files
  - Files are created and maintained by the appropriate people
  - Any tool can plug in, so you can work with your favorites

## ● Main goal is to help you easily create Dynamic Web applications:

- Standard HTML and other Web technologies: Applets, Beans, Images, XML...
- Wizards to build
  - Java servlets and JavaServer Pages (JSP)
  - JavaBeans
  - Database Access

? Copyright 1999-2001 IBM Corporation



e-business

# WebSphere Studio Workbench

The screenshot shows the WebSphere Studio Workbench interface. On the left is a project tree for 'JKT ToysInternet' containing folders like 'images', 'JKT Toys', and 'JSP', and various JSP files such as 'JKT ToysChoices.jsp' and 'JKT ToysDisplayOrders.jsp'. The main window is split into several panes: 'Publishing' shows a tree of the application's structure; 'Relations' displays a dependency graph for 'JKT ToysDisplayOrders.jsp'; and a preview window shows a web page titled 'is your order history' with a table of order data and a 'View Details' button. A small dialog box is also visible in the foreground.

Order Number	Date	Order Status	Total Price	Select Order to Review
1	05/01/2000	Completed	\$120.00	<input type="checkbox"/>
2	05/01/2000	Completed	\$120.00	<input type="checkbox"/>
3	05/01/2000	Completed	\$120.00	<input type="checkbox"/>

? Copyright 1999-2001 IBM Corporation



e-business

## Studio Includes Everything You Need...



- Studio Workbench
  - Helps you manage and maintain your site's files
  - Creates, edits, copies and publishes files
  - Supports file sharing
- Studio Wizards
  - Gets developers up and going quickly
  - Provides support for database applications with JavaBeans
- Page Designer
  - Edits HTML & JSP pages

? Copyright 1999-2001 IBM Corporation



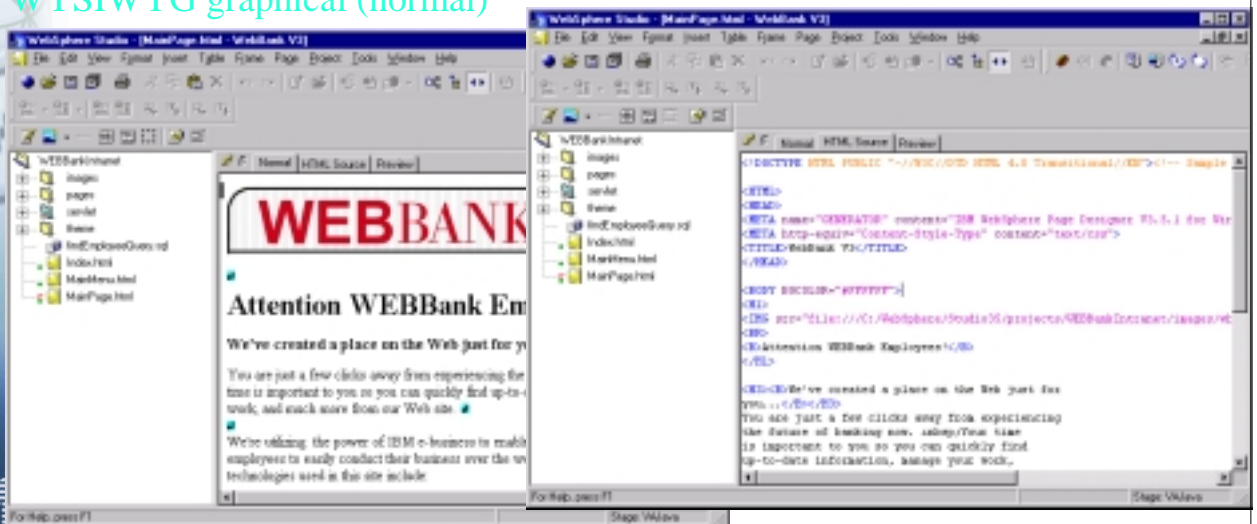
e-business

## Page Designer Views

- The page edit area has three views...

WYSIWYG graphical (normal)

Text editing (HTML Source)

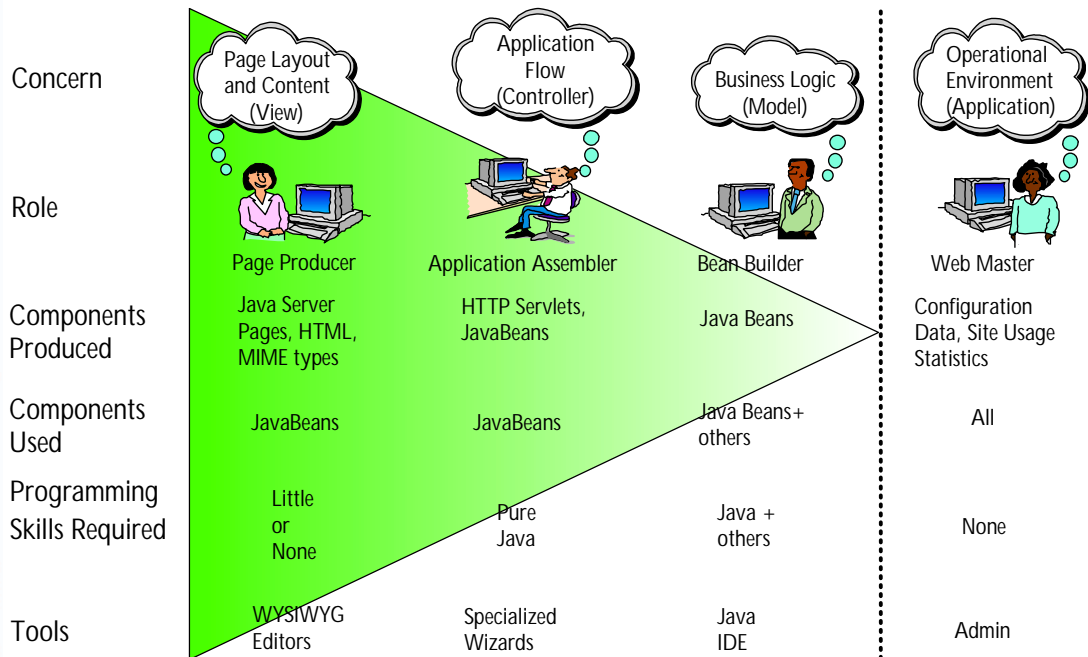


? Copyright 1999-2001 IBM Corporation



e-business

## Web Application Development and Roles



"Let the right expert do the work."

? Copyright 1999-2001 IBM Corporation



e-business

## WebSphere Business Components

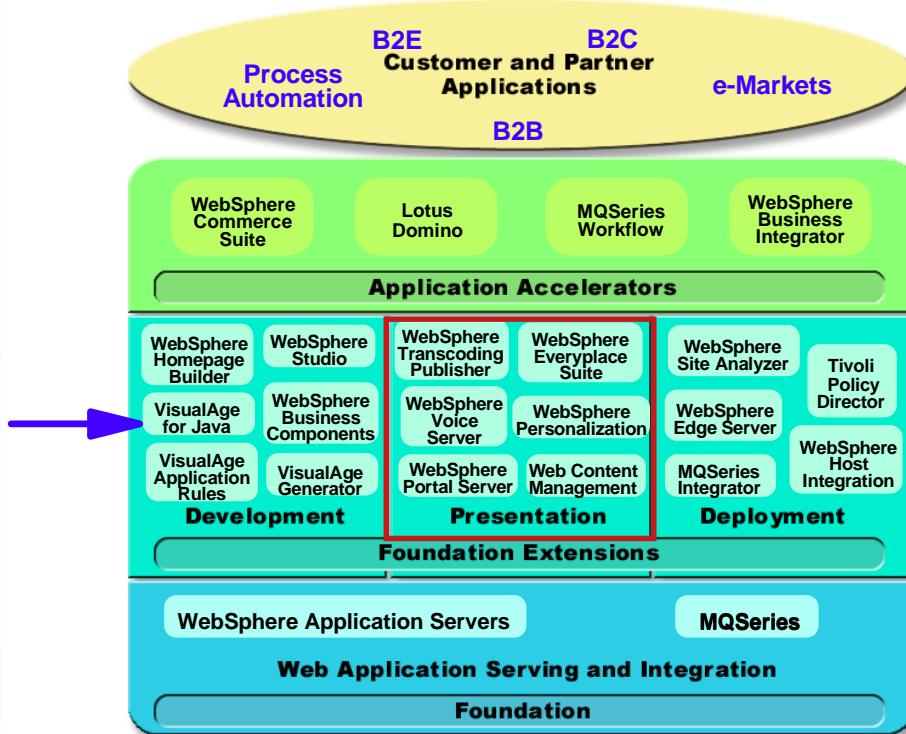
- Tools and EJBs that enable RAD
- Platform-neutral
- Two levels
  - Advanced components
    - Coarse-grained
    - Provide large independent parts which when assembled together can be used to create an application
  - Base Components
    - Fine-grained
    - Provide smaller interrelated parts used either to directly create an application or to create coarse-grained components
- <http://www.ibm.com/software/components/annc112800.html>

? Copyright 1999-2001 IBM Corporation



e-business

# WebSphere software platform Foundation Extensions - Presentation

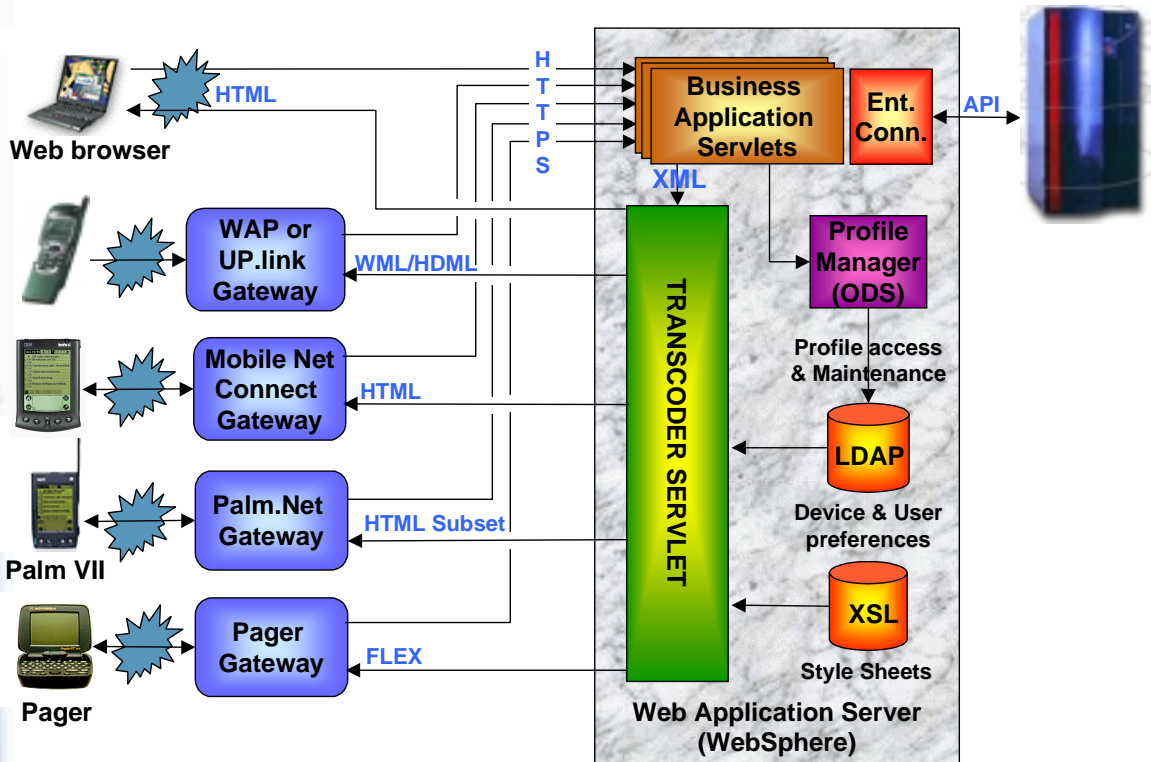


Copyright 1999-2001 IBM Corporation



e-business

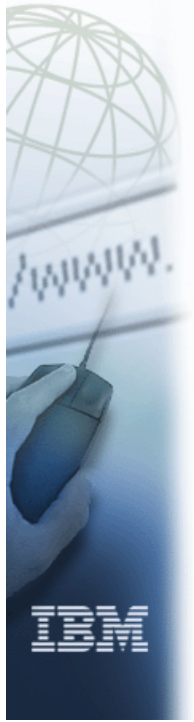
# Multiple Devices Requirement



Copyright 1999-2001 IBM Corporation



e-business



## The Solution to Data Interchange

### *Transcoding*

- Software that filters, enhances, converts, or reformats data (e.g., Host and Web content) to:
  - Match the form factor and capabilities of the client device
  - Personalize data to user or environmental requirements
  - Enhance business to business communications via XML technology
  - Provide a wide range of devices and systems and their users with better access to information

? Copyright 1999-2001 IBM Corporation



e-business



## WebSphere Transcoding Publisher

- Transcoding Publisher **JavaBeans** can be included within WebSphere applications to provide transcoding services
- Transcoding Publisher **Servlets** can complement unchanged WebSphere applications to transform content
- **Proxy** configurations enable wide range of placement options for transcoding services

? Copyright 1999-2001 IBM Corporation





e-business



## WebSphere Everyplace Suite

- Develop, manage and deliver Web and enterprise applications to a variety of devices, including wireless handsets, PDAs and other Internet appliances
- Combines into one product the necessary "software ingredients" for **Pervasive Computing**

? Copyright 1999-2001 IBM Corporation



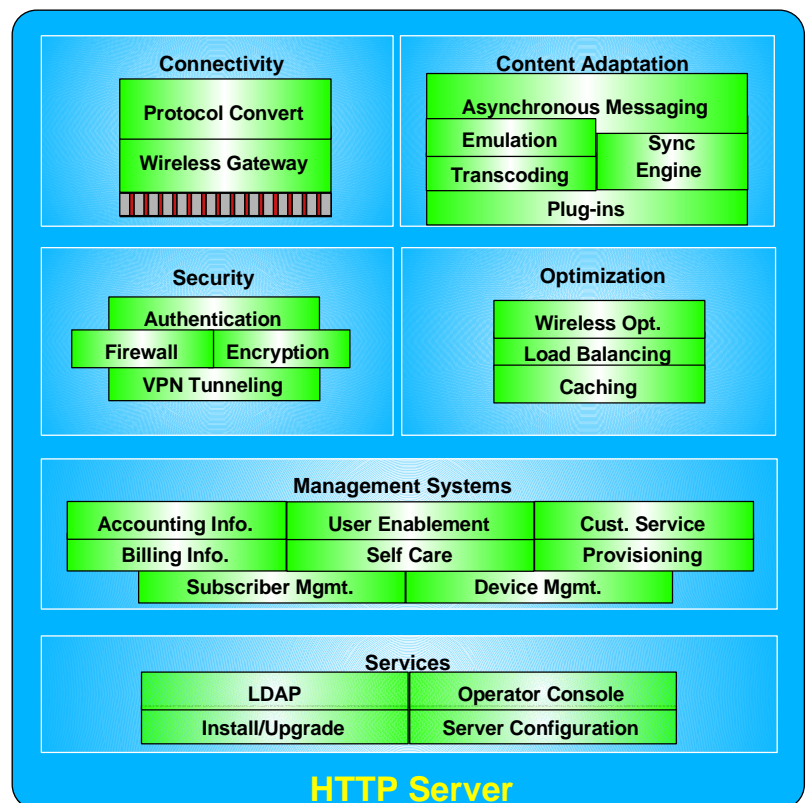
e-business



## WebSphere Everyplace Suite

### Suite Content:

- Wireless GW
- Transcoder
- Boundary Server
- Edge Server
- Subscriber Mgmt
- Directory
- WAS
- Synchronization



? Copyright 1999-2001 IBM Corporation



e-business

# WebSphere Personalization

- Deliver pages that are customized to the interests and needs of each site visitor
- Personalization elements include
  - **User Profile**
    - Users of the site
    - Contains attributes about the user
    - Groups and Hierarchies
    - Implemented as EJBs
  - **Content Model**
    - Products, articles, programs, etc
    - Defines attributes about the content
    - Groups and Hierarchies
  - **Matching Technology**
    - Filtering, Rules or Recommendation Engines or combinations of all three
    - Matches user to the "right" content
- Explicit/Implicit population of user and content repositories
- Feedback on personalization effectiveness

```

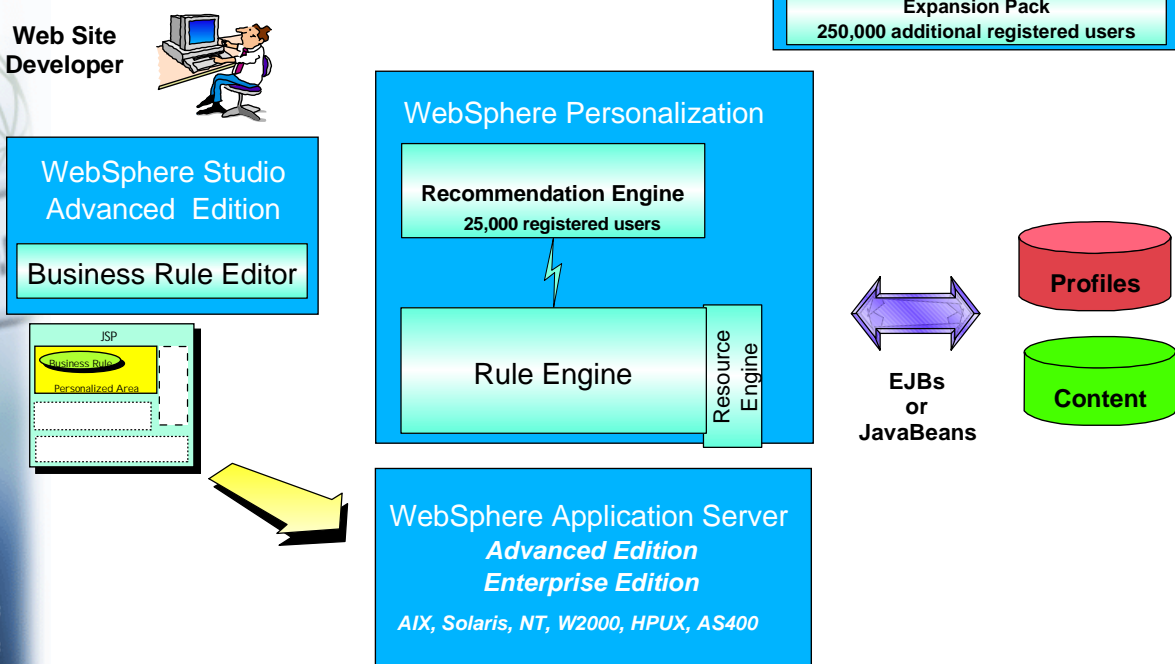
If
  user income > $50,000
and
  investment risk
  tolerance is high,
then
  select * from Stocks
  where
  category=Internet Startups
  
```

? Copyright 1999-2001 IBM Corporation



e-business

# WebSphere Personalization



? Copyright 1999-2001 IBM Corporation



e-business

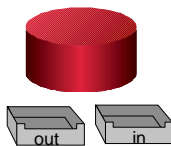
## WebSphere Content Management

*"Get me all the info I need for ..."*



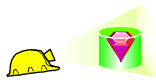
**Integrated Information**

### Business Process



- ▶ Order status
- ▶ A/R situation

### Analysis



- ▶ Customer profile
- ▶ Buying patterns

### Computer Generated Output



- ▶ Invoices

### Images & MultiMedia



- ▶ Correspondence
- ▶ Analyst reports
- ▶ Annual reports

### Experience



- ▶ Expertise

? Copyright 1999-2001 IBM Corporation



e-business

## WebSphere Portal Server

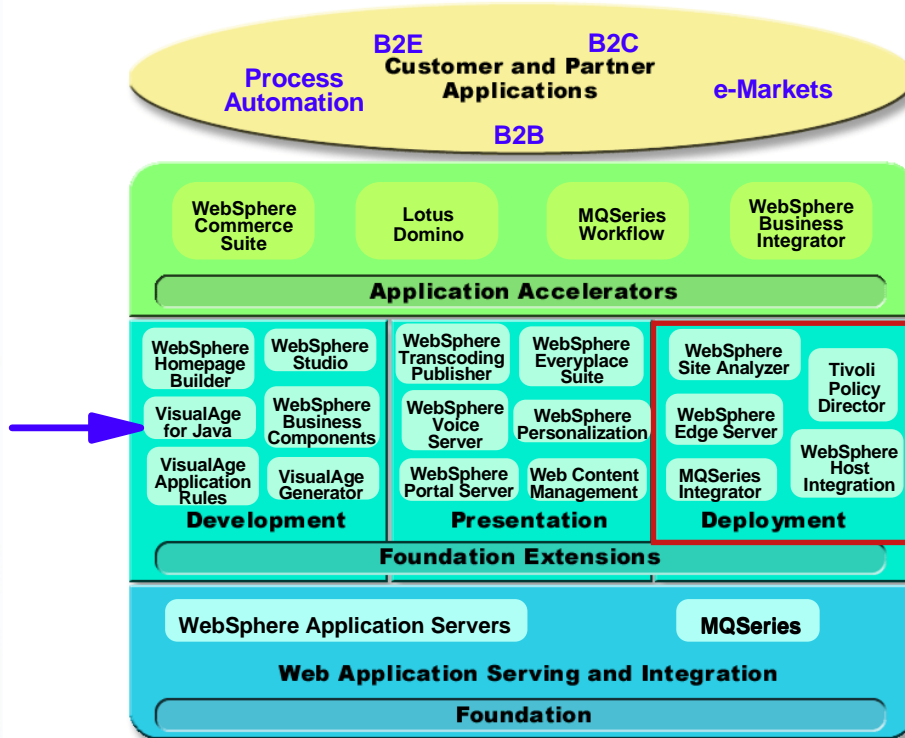
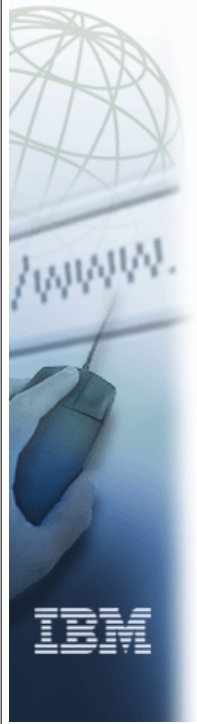
- Allows companies to build their own custom portal Web sites for employees, business partners and customers
- Includes
  - WebSphere Personalization
  - The IBM Enterprise Information Portal (federated search engine)
  - Tivoli for management
- Includes information, application, collaboration, integration, and management services
- Works with WebSphere Content Publisher
- IBM and Lotus joint development

? Copyright 1999-2001 IBM Corporation



# WebSphere software platform

## Foundation Extensions - Deployment



© Copyright 1999-2001 IBM Corporation

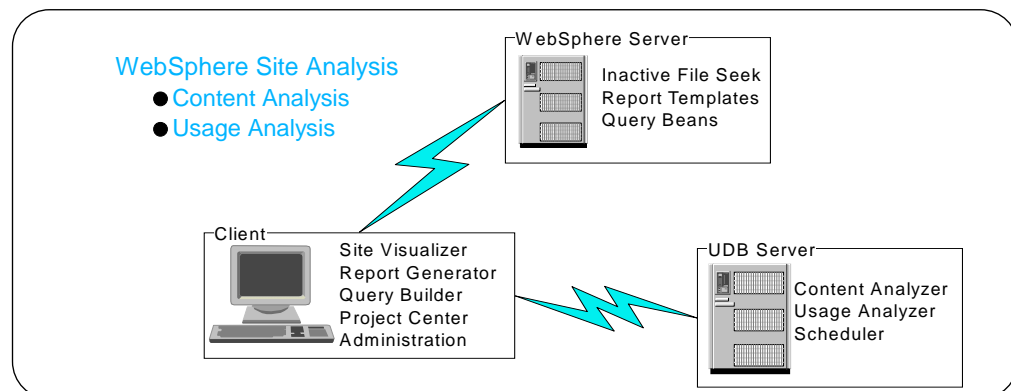
## WebSphere Site Analyzer

*Understand, monitor and improve structure and usage patterns of web sites, and assist in personalizing site content*

### Usage:

- Measure and optimize usage rates (WebMaster)
- Build the most effective designs for personalized content (page designers)
- Improve site flows after initial deployment (creative director)
- Find structural web site problems (creative director)
- Track usage profiling and behavior analysis to ensure effective customized, personalized content delivery (analyst)

*First shipped with WAS 3.0, now a separate product*

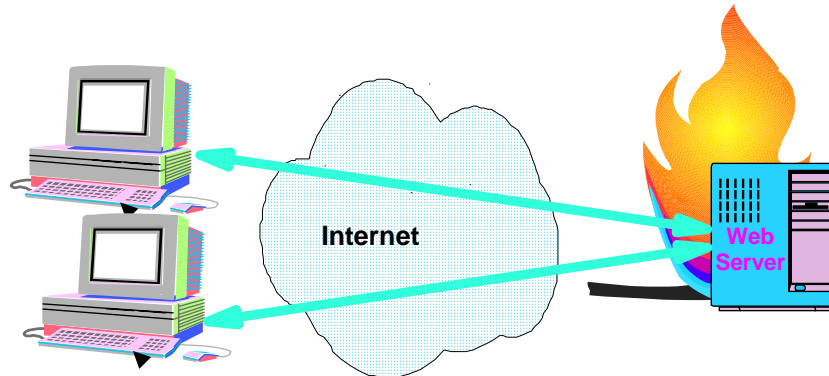




e-business

# WebSphere Edge Server

## Plan for success...Or Else!



### Rapid growth, Peak Loading problems

- ▶ Web Server connection limitations
- ▶ Time to recover from failures, maintenance
- ▶ 'Crash & Burn' under peak loads - 'Hot Spots'
- ▶ User dissatisfaction

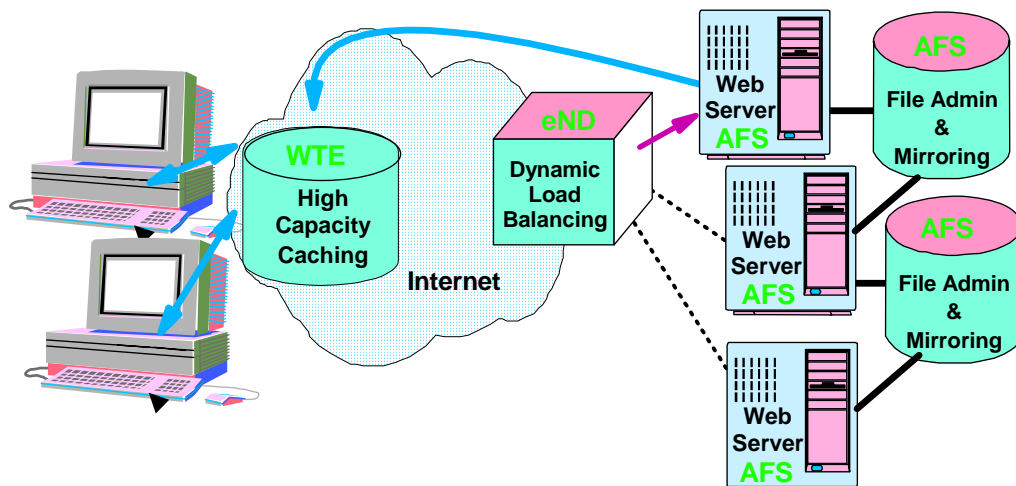
? Copyright 1999-2001 IBM Corporation



e-business

# WebSphere Edge Server

## Scalability, Performance, and Availability

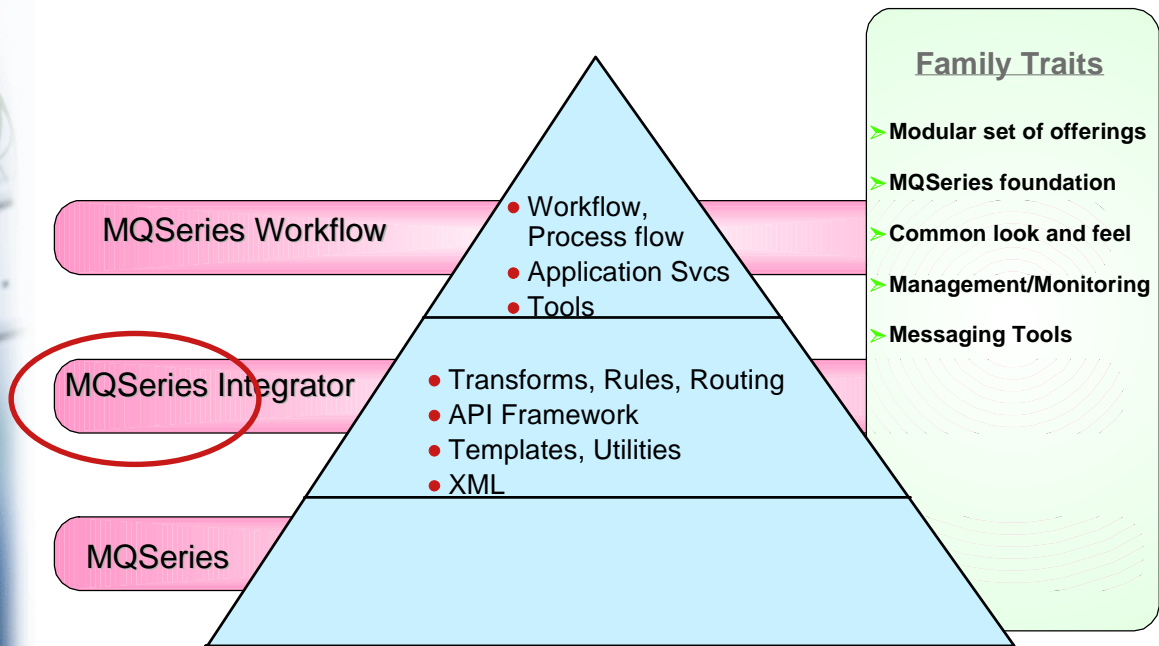


? Copyright 1999-2001 IBM Corporation



e-business

## MQSeries Family

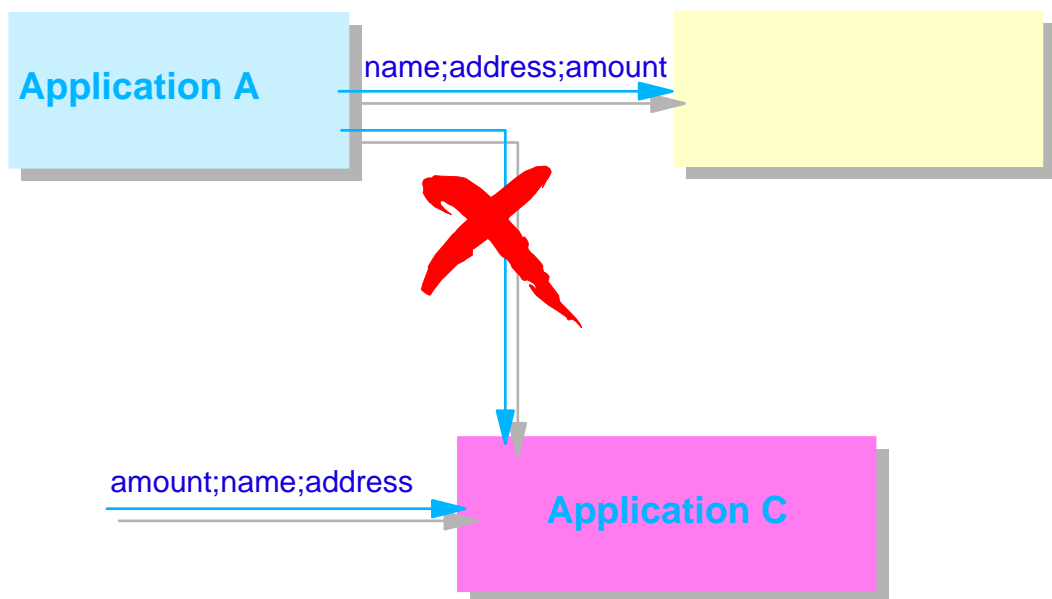


? Copyright 1999-2001 IBM Corporation



e-business

## The Challenge: Incompatible Message Formats

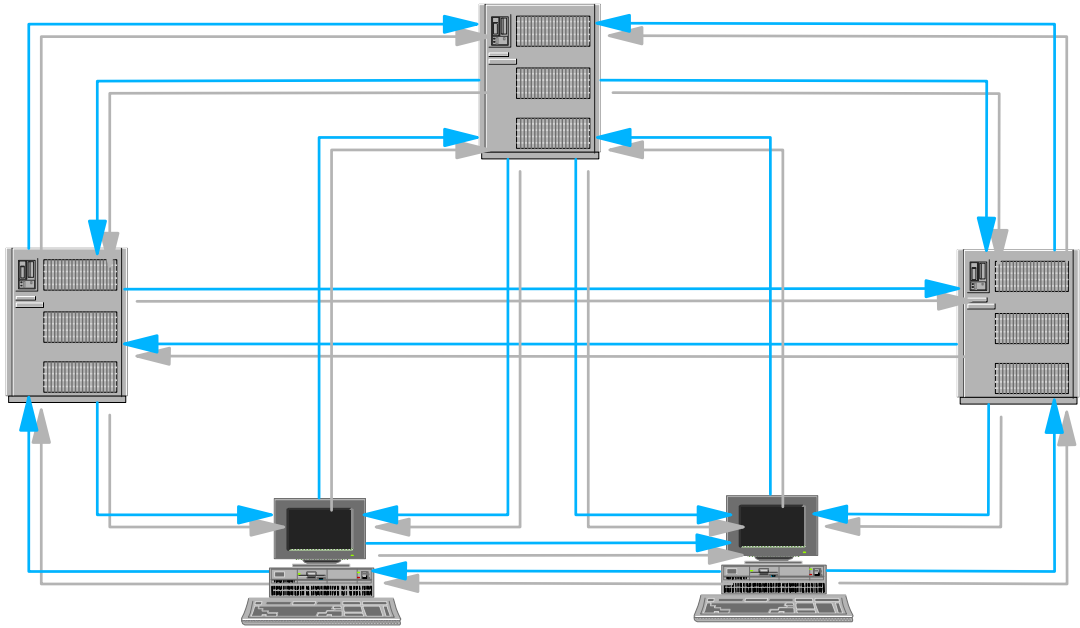


? Copyright 1999-2001 IBM Corporation



e-business

# The Challenge: Point-to-Point Links



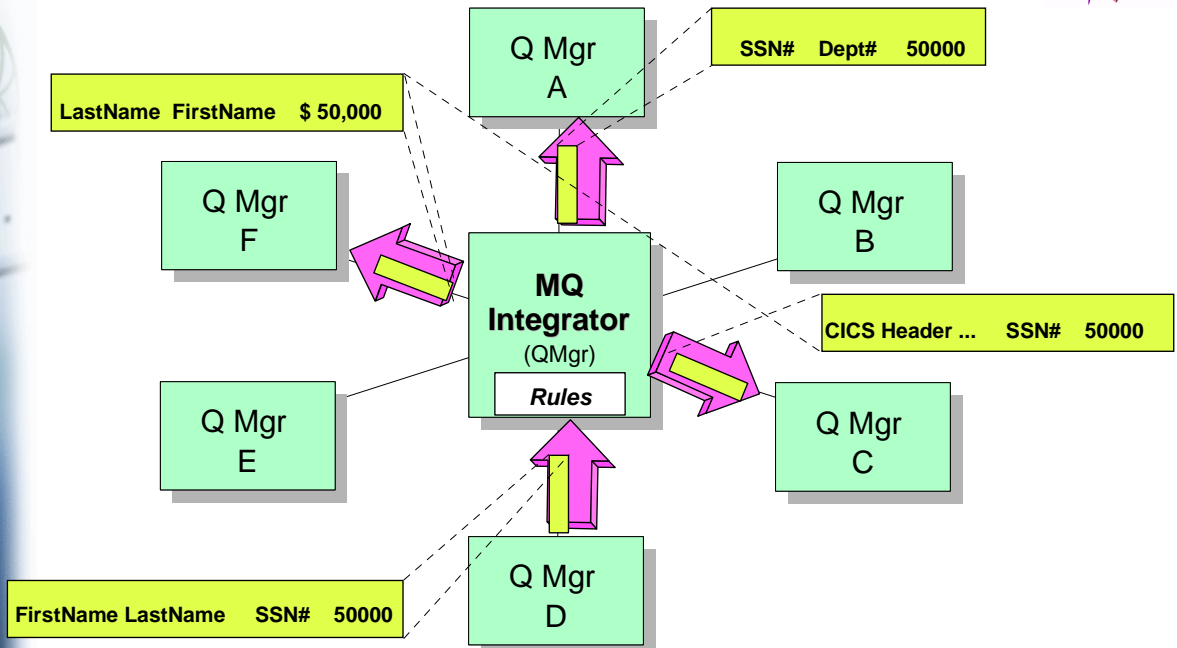
? Copyright 1999-2001 IBM Corporation



e-business

# The Solution: MQSeries Integrator

- ✓ Intelligent Message routing -- is a **hub**
- ✓ Rules-based Data transformation



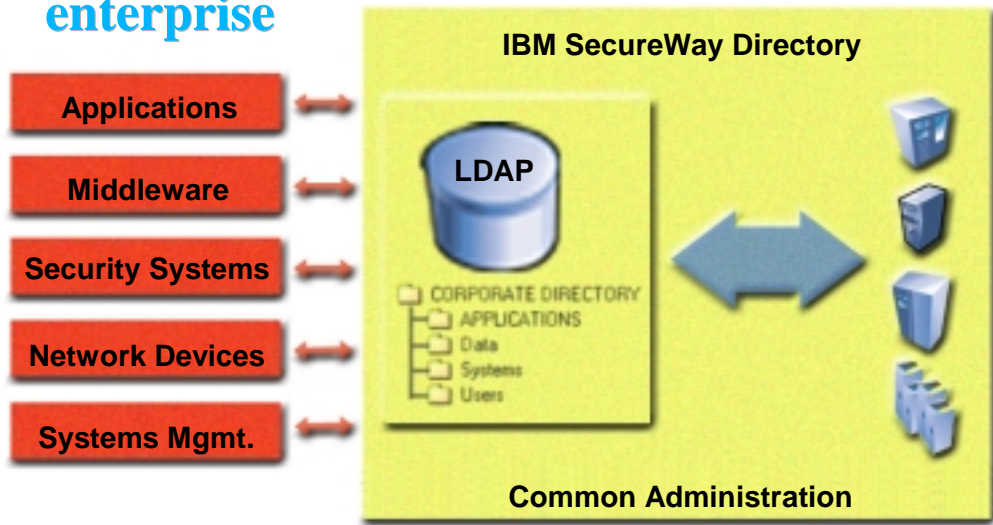
? Copyright 1999-2001 IBM Corporation



e-business

# SecureWay LDAP Directory Server

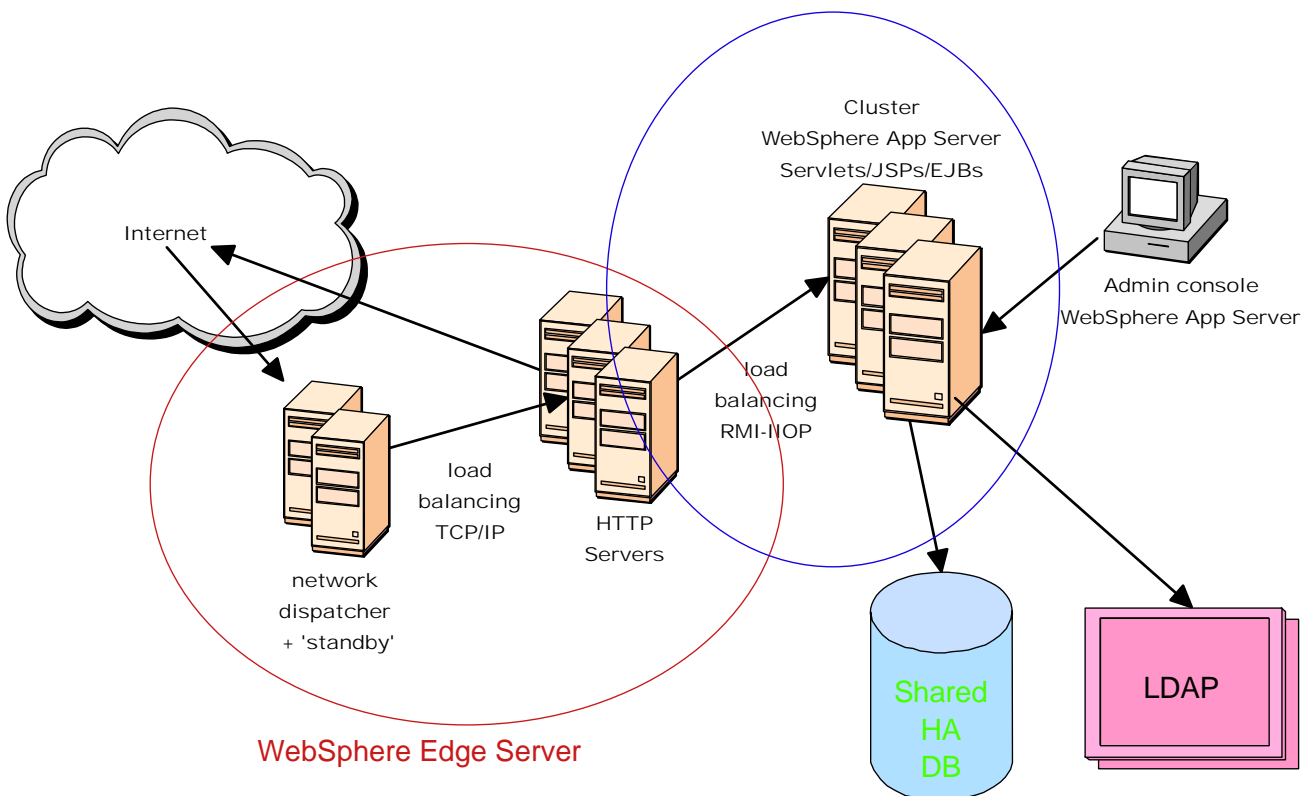
## A common directory for the enterprise



## A single consistent view of all your directory information

? Copyright 1999-2001 IBM Corporation

# IBM Offers a Complete Solution

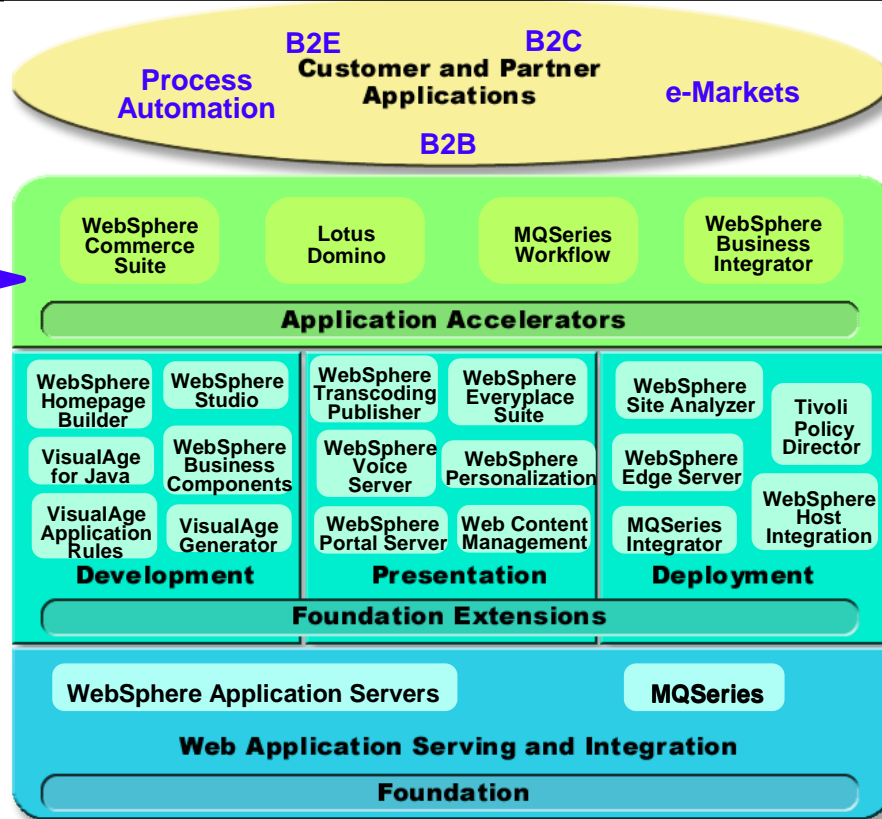






e-business

# WebSphere software platform for e-business



3M Corporation



e-business

## WebSphere software platform *Application Accelerators*

- WebSphere Commerce Suite
- Lotus Domino
- MQSeries Workflow
- Business Integrator

? Copyright 1999-2001 IBM Corporation



e-business



## Websphere Commerce Suite

---

### ● Objectives:

- ▶ Provide the **industry leading integrated e-Commerce Solution**
  - ✓ Robust application server platform
  - ✓ Complete e-Commerce solution based on IBM best of breed technology
  - ✓ Performance, reliability, scalability, robustness
  - ✓ Open and extensible framework based on industry standards

### ● Benefits

- ▶ Modular & robust solution that satisfies short term needs and longer term growth and extensibility requirements
- ▶ Highly scalable solution that grows to meet the business demands
- ▶ Complete solution from a single vendor

? Copyright 1999-2001 IBM Corporation



e-business



## WCS V5 Themes

---


- New Commerce Server
  - Java, EJBs, JSPs
  - Multicultural support
  - Pricing/discounts
  - Pervasive computing enablement
  - B2B enhancements
  - Enhanced operational tools
- Commerce Accelerator
- Business Intelligence

? Copyright 1999-2001 IBM Corporation



e-business

## WCS Marketplace Edition

**ORDERING:**  
 User Name: 
 HELP  
 YOUR ACCOUNT

Catalog      Orders      Payment

**Business-to-Consumer**





Integration & Workflow      tpaML      Negotiated Pricing

**Business-to-Business**



**WebSphere e-marketplace**

**WebSphere Business Integrator**

**WebSphere Commerce Suite**

- Catalogs
- Pricing
- RFI / RFQ
- Negotiations
- Contracts
- Auctions

**e-markets**

IBM

? Copyright 1999-2001 IBM Corporation



e-business

## Lotus Domino



- An integrated messaging and Web application software platform
- **Mail Server**
  - Full support for the latest Internet mail standards
  - Industry-leading messaging capabilities -- all in one manageable and reliable infrastructure
- **Application Server**
  - Open, secure platform
  - Optimized to deliver collaborative Web apps that integrate your enterprise systems with changing business processes
- **Enterprise Server**
  - All of the above
  - Plus clustering for the high availability/reliability required by mission-critical applications

IBM

? Copyright 1999-2001 IBM Corporation

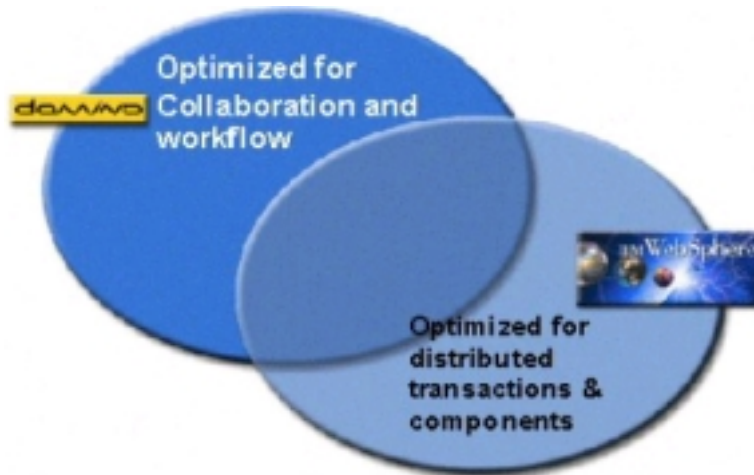


e-business

# Lotus Domino



- Works well with WebSphere



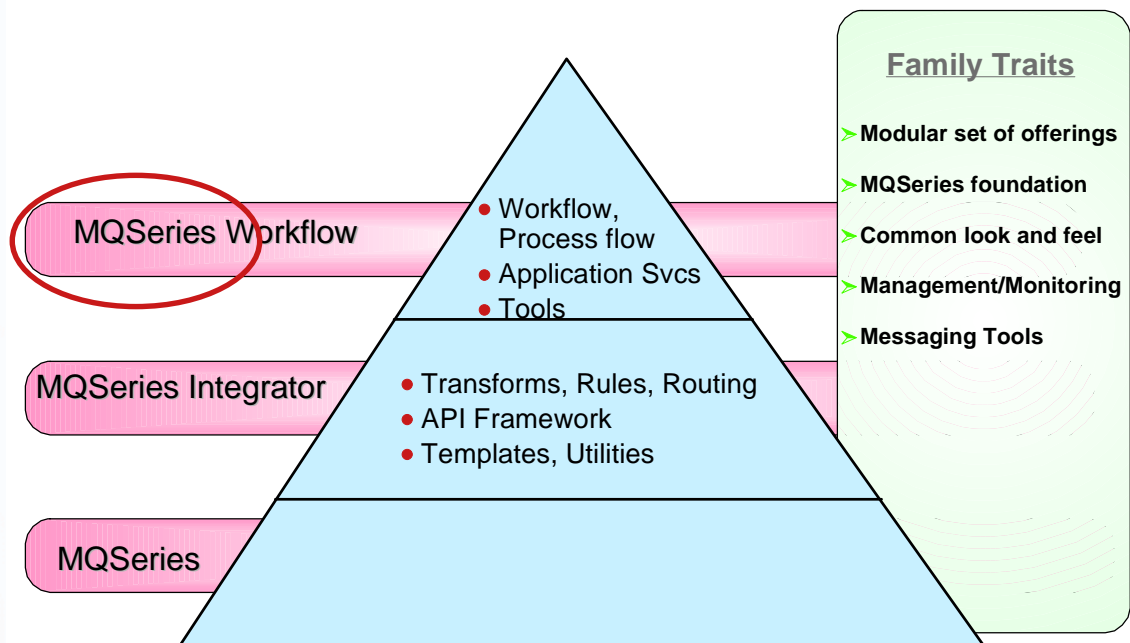
- Often used together

? Copyright 1999-2001 IBM Corporation



e-business

# MQSeries Workflow



? Copyright 1999-2001 IBM Corporation



e-business



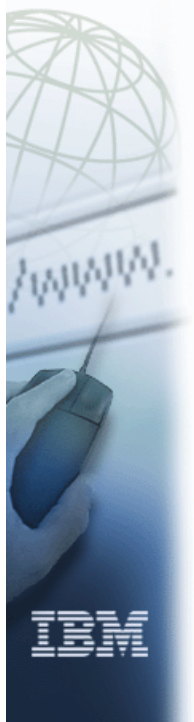
## MQSeries Workflow

- Model-driven e-business process automation and tracking
- Combines the ability to define and manage the business processes, organization, and infrastructure
- Removes the flow dependency from the application
- Allows you to extract standard data management functions from an application program
- Transactional and universal integration based on MQSeries and XML

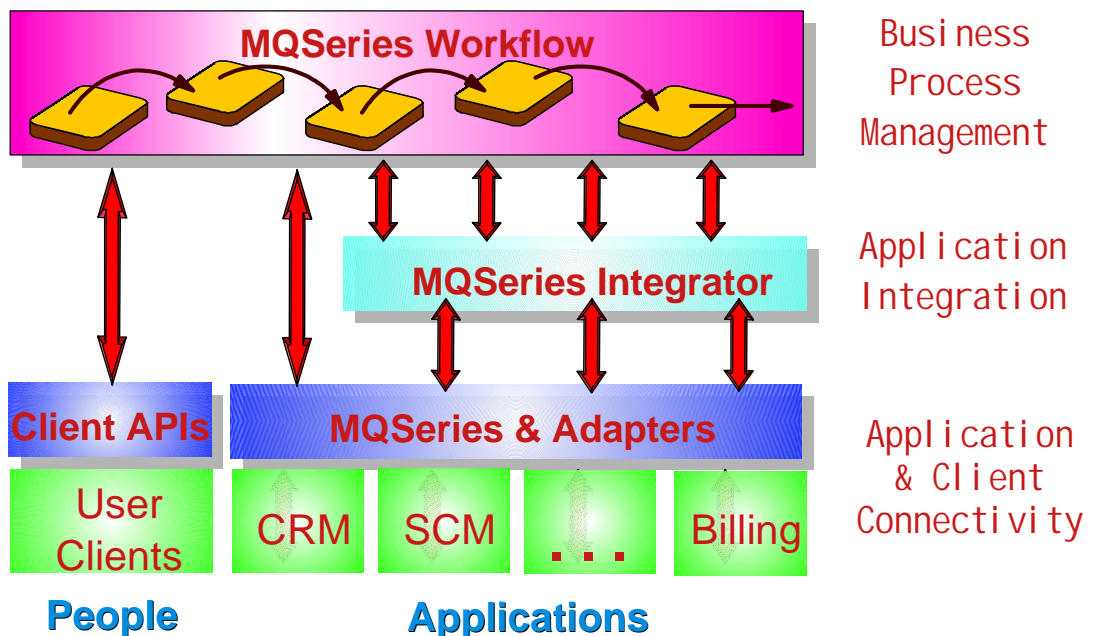
? Copyright 1999-2001 IBM Corporation



e-business



## MQSeries Family



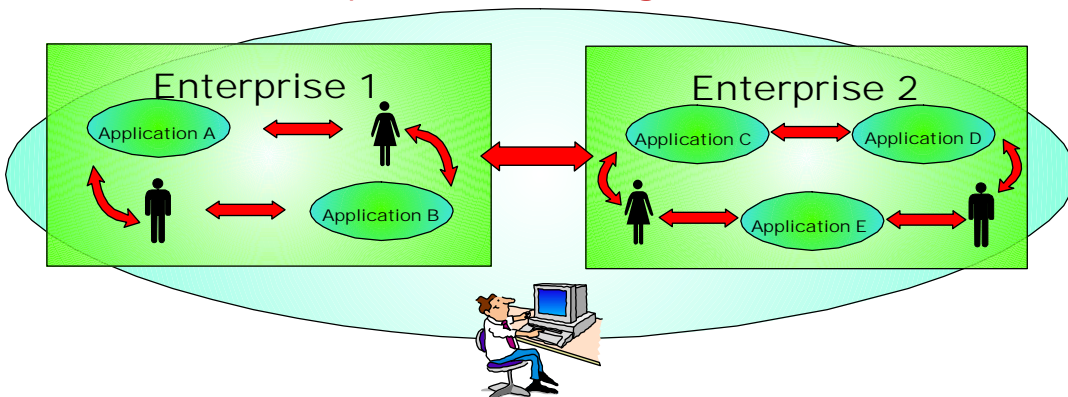
? Copyright 1999-2001 IBM Corporation



e-business

# WebSphere Business Integrator (Formerly WebSphere B2B Integrator)

An integrated framework for end-to-end e-business process management (e-BPM)



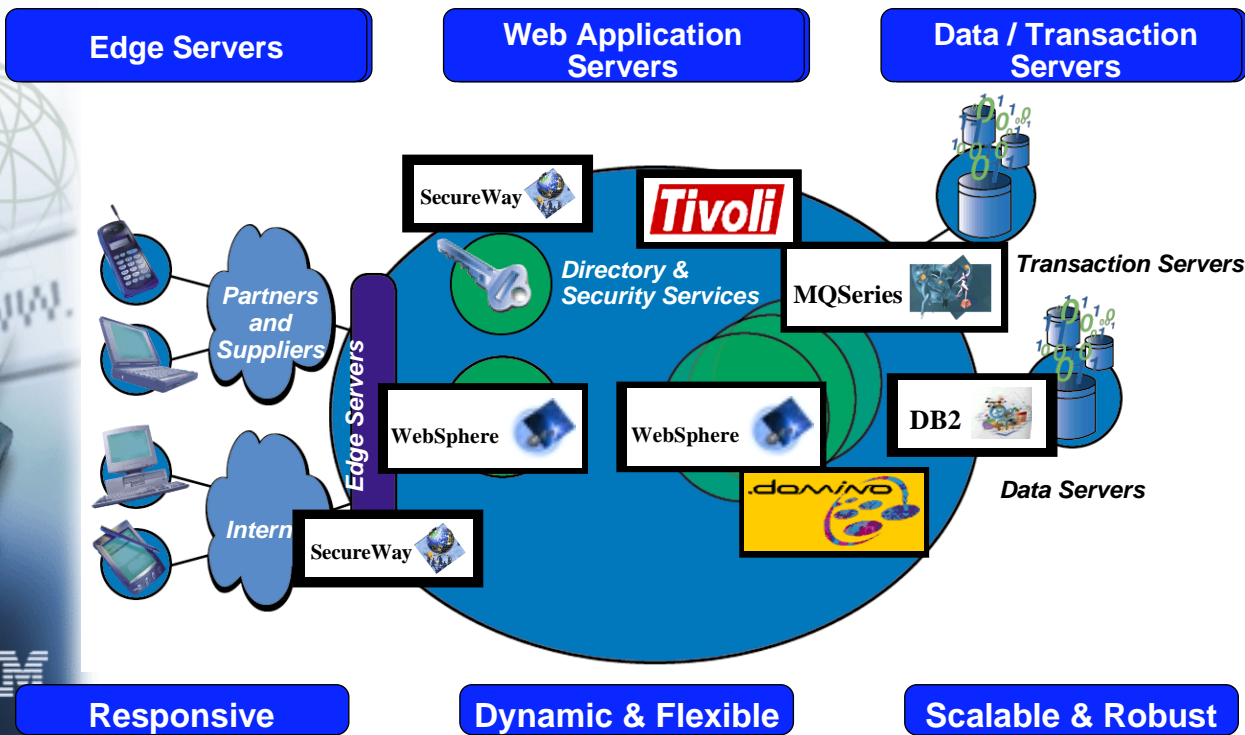
*Enables companies to create, execute, and manage business processes that span diverse applications, enterprises, and people...  
...and to manage them -- as well as the underlying operational infrastructure -- as a complete system.*

? Copyright 1999-2001 IBM Corporation



e-business

# Topology for e-business



? Copyright 1999-2001 IBM Corporation



e-business



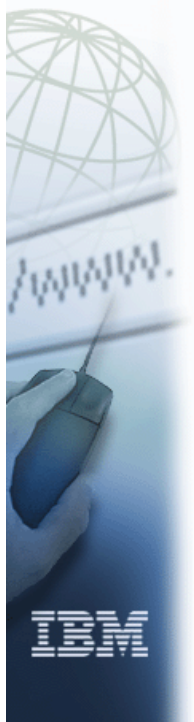
## Key Differentiators of WebSphere

- End-to-end Solution and Consistency
- Performance, Scalability, and Reliability
- Supports Growth of Web Applications
- Promotes Effective team Development
- Promotes Componentized Web Applications and Reuse of parts
- Cross Platform/Portable Applications
- Supports all Java/Internet Standards
- Combines Robust Back-end connectivity with Flexible interfaces
- Based on **open standards**

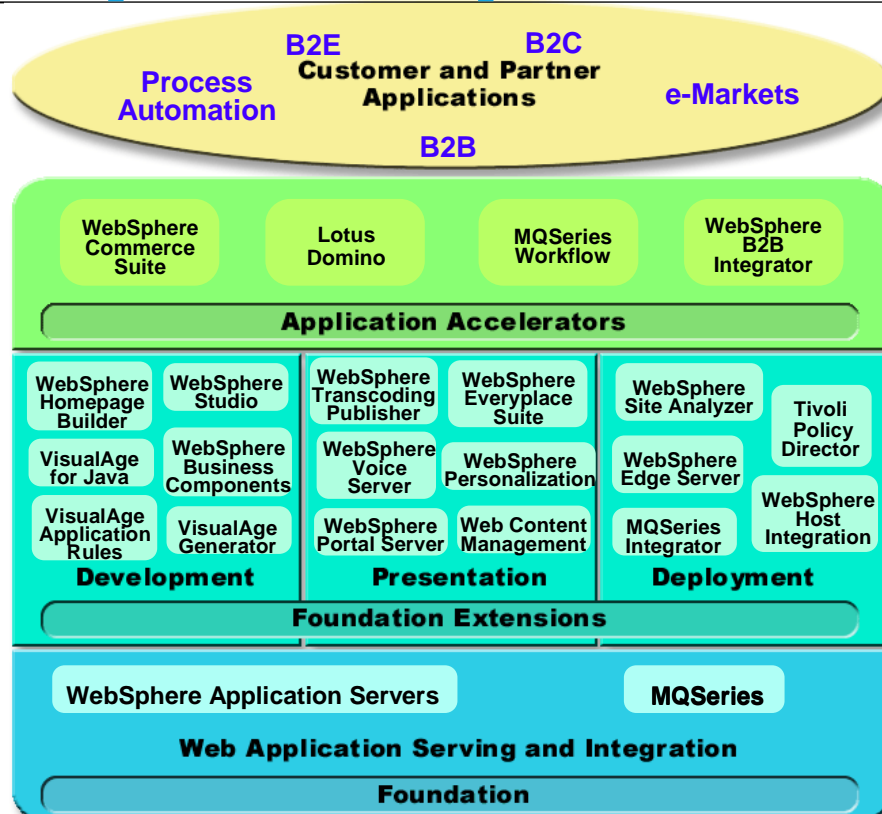
? Copyright 1999-2001 IBM Corporation



e-business



## WebSphere software platform for e-business



3M Corporation



e-business



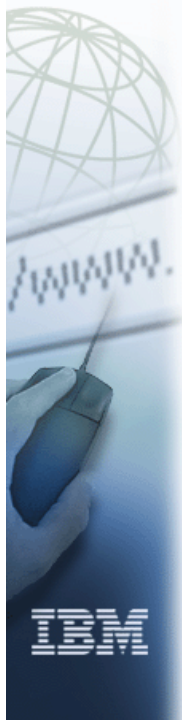
## Useful IBM URLs

- **IBM Software:** [www.software.ibm.com](http://www.software.ibm.com)
  - Spec sheets for all products
  - downloadable trial versions
  - support and e-fixes
- **PartnerWorld for Developers:** [www.developer.ibm.com](http://www.developer.ibm.com)
  - Marketing & sales support
  - Technical support
  - Education
- **DeveloperWorks:** [www.ibm.com/developerWorks](http://www.ibm.com/developerWorks)
  - Technology Zones: java, standards, web architecture ...
  - Developer offerings: How to buy, downloads, support
  - Education, tutorials, White Papers, tips...
- **Redbooks:** [www.redbooks.ibm.com](http://www.redbooks.ibm.com)
  - Extensive documentation on Websphere, WCS, VAJ, DB2, architecture and development...
  - Downloadable and printable PDFs on-line
- **AlphaWorks:** [www.alphaworks.ibm.com](http://www.alphaworks.ibm.com)
  - IBM emerging "alpha-code" technologies
- **Case Studies:**  
<http://www2.software.ibm.com/casestudies/swcs.nsf/topstories>

? Copyright 1999-2001 IBM Corporation

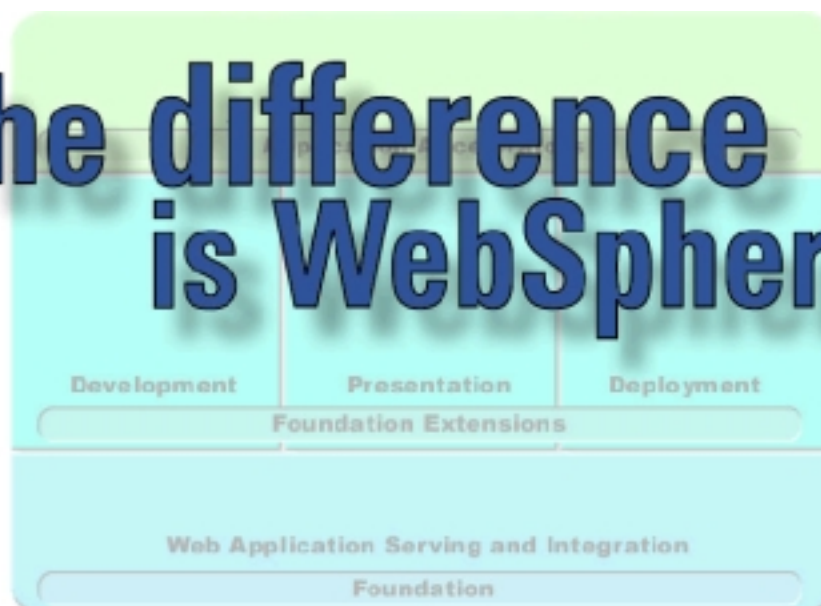


e-business



## WebSphere software platform for e-business

The difference  
is WebSphere.



? Copyright 1999-2001 IBM Corporation





e-business



## WebSphere



? Copyright 1999-2001 IBM Corporation



e-business



# End

Thanks for Attending!

Questions?

